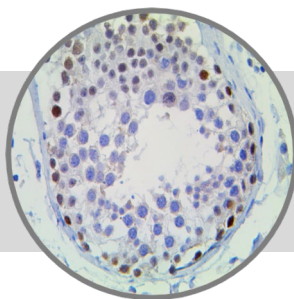


**BCOR, MMab**

Clone: BSB-128

Mouse Monoclonal



IVD

**Bio SB**  
 BIOSCIENCE FOR THE WORLD
 

www.biosb.com

Inset: BCOR on a FFPE Testis Tissue

**Intended Use**

For In Vitro Diagnostic Use.

This antibody is intended for use in Immunohistochemical applications on formalin-fixed paraffin-embedded tissues (FFPE), frozen tissue sections and cell preparations. Interpretation of results should be performed by a qualified medical professional.

**Immunogen**

Synthetic peptide corresponding to residues of the N-terminus of the human BCOR protein.

**Summary and Explanation**

BCOR is located on chromosome X, in the *Xp11.4* locus, and derives its name from its function as an interacting corepressor of BCL-6 that enhances BCL-6-mediated transcriptional repression. BCOR is a gene that encodes for an epigenetic regulator involved in the specification of cell differentiation and body structure development. Various BCOR aberrations, represent driver elements of various sarcomas such as Clear Cell Sarcoma of the Kidney, Primitive Mesenchymal Myxoid Tumor of infancy, small round blue cell sarcoma, endometrial stromal sarcoma and histologically heterogeneous CNS neoplasms group with similar genomic methylation patterns known as CNS-HGNET-BCOR. Furthermore, other BCOR alterations (often loss of function mutations) recur in a large variety of Mesenchymal, Epithelial, Neural and Hematological Tumors, suggesting a central role in cancer evolution.

Using next-generation sequencing, an increasing number of novel gene fusions and other abnormalities have emerged recently in the spectrum of EWSR1-negative Small Blue Round Cell Tumors (SBRCTs). A subset of SBRCTs harboring either BCOR gene fusions (BCOR-CCNB3, BCOR-MAML3), BCOR internal tandem duplications (ITD), or YWHAENUTM2B share a transcriptional signature including high BCOR mRNA expression, as well as similar histologic features. Furthermore, other tumors such as Clear Cell Sarcoma of Kidney (CCSK) and Primitive Myxoid Mesenchymal Tumor of Infancy (PMMTI) also demonstrate BCOR ITDs and high BCOR gene expression. Recent studies have found the IHC of BCOR to be a highly sensitive marker for SBRCTs and CCSKs with BCOR abnormalities and YWHA rearrangements and can be used as a useful diagnostic marker in these various molecular subsets.

In another study, Strong diffuse nuclear BCOR staining (defined as >95% of tumor cells) was seen in the round cell component of 20 (100%) classic YWHAE-NUTM2 high-grade Endometrial Stromal Sarcomas and the 3 unusual high-grade Endometrial Stromal Sarcomas. It was concluded that BCOR immunohistochemical staining is a highly sensitive marker for YWHAE-NUTM2 high-grade Endometrial Stromal Sarcomas with both classic and unusual morphology and identifies a subset of high-grade Endometrial Stromal Sarcomas with BCOR alterations, including BCOR rearrangement and internal tandem duplication.

<b>Antibody Type</b>	Mouse Monoclonal	<b>Clone</b>	BSB-128
<b>Isotype</b>	IgG1/K	<b>Reactivity</b>	Paraffin, Frozen
<b>Localization</b>	Nuclear	<b>Control</b>	Testis, Cervix, Prostate, TCC, Angiosarcoma
<b>Species Reactivity</b>		Human	

**Presentation**

Anti-BCOR is a mouse monoclonal antibody derived from cell culture supernatant that is concentrated, dialyzed, filter sterilized and diluted in buffer pH 7.5, containing BSA and sodium azide as a preservative.

Catalog No.	Antibody Type	Dilution	Volume/Qty
BSB-2370-3	Tinto Predilute	Ready-to-Use	3.0 mL
BSB-2370-7	Tinto Predilute	Ready-to-Use	7.0 mL
BSB-2370-15	Tinto Predilute	Ready-to-Use	15.0 mL
BSB-2370-01	Concentrate	1:10 - 1:25	0.1 mL
BSB-2370-05	Concentrate	1:10 - 1:25	0.5 mL
BSB-2370-1	Concentrate	1:10 - 1:25	1.0 mL

**Control Slides Available**

Catalog No.	Quantity
BSB-2370-CS	5 slides

**Precautions**

1. For professional users only. Results should be interpreted by a qualified medical professional.
2. This product contains <0.1% sodium azide (NaN<sub>3</sub>) as a preservative. Ensure proper handling procedures are used with this reagent.
3. Always wear personal protective equipment such as laboratory coat, goggles and gloves when handling reagents.
4. Dispose of unused solution with copious amount of water.
5. Do not ingest reagent. If reagent is ingested, seek medical advice immediately.
6. Avoid contact with eyes. If contact occurs, flush with large quantities of water.
7. Follow safety precautions of the heating device used for epitope retrieval (TintoRetriever Pressure Cooker or similar).
8. For additional safety information refer to Safety Data Sheet for this product.
9. For complete recommendations for handling biological specimens, please refer to the CDC document, "Guidelines for Safe Work Practices in Human and Animal Medical Diagnostic Laboratories" (see References in this document).

**Storage** Store at 2-8°C

**Stability**

**This product is stable up to the expiration date on the product label.** Do not use after expiration date listed on package label. Temperature fluctuations should be avoided. Store appropriately when not in use and avoid prolonged exposure to room temperature conditions.

## Specimen Preparation

**Paraffin sections:** The antibody can be used on formalin-fixed paraffin-embedded (FFPE) tissue sections. Ensure tissue undergoes appropriate fixation for best results. Pre-treatment of tissues with heat-induced epitope retrieval (HIER) is recommended using Bio SB ImmunoDNA Retriever with Citrate (BSB 0020-BSB 0023), ImmunoDNA Retriever with EDTA (BSB 0030-BSB 0033) or ImmunoDNA Digestor (BSB 0108-0112). See reverse side for complete protocol. Tissue should remain hydrated via use of Bio SB Immuno/DNA Washer solutions (BSB 0029 & BSB 0042).

**Frozen sections and cell preparations:** The antibody can be used for labeling acetone-fixed frozen sections and acetone-fixed cell preparations.

## Staining Procedure

1. Cut and mount 3-5 micron formalin-fixed paraffin-embedded tissues on positively charged slides such as Bio SB Hydrophilic Plus Slides (BSB 7028).
2. Air dry for 2 hours at 58° C.
3. Deparaffinize, dehydrate and rehydrate tissues.
4. Subject tissues to heat induced epitope retrieval (HIER) using a suitable retrieval solution such as ImmunoDNA Retriever with Citrate (BSB 0020-BSB 0023) or EDTA (BSB 0030-BSB 0033).
5. Any of three heating methods may be used:

### a. TintoRetriever Pressure Cooker or Equivalent

Place tissues/slides in a staining dish or coplin jar containing the ImmunoDNA Retriever with Citrate or EDTA, and place on trivet in the pressure cooker. Add 1-2 inches of distilled water to the pressure cooker and turn heat to high. Incubate for 15 minutes. Open and immediately transfer slides to room temperature.

### b. TintoRetriever PT Module or Water Bath Method

Place tissues/slides in a pre-warmed staining dish or coplin jar containing the ImmunoDNA Retriever with Citrate or EDTA at 95°-99° C. Incubate for 30-60 minutes.

### c. Conventional Steamer Method

Place tissues/slides in a pre-warmed staining dish or coplin jar containing the ImmunoDNA Retriever with Citrate or EDTA in a steamer, cover and steam for 30-60 minutes.

6. After heat treatment, transfer slides in ImmunoDNA Retriever with Citrate or EDTA to room temperature and let stand for 15-20 minutes.
7. For manual staining, perform antibody incubation at ambient temperature. For automated staining methods, perform antibody incubation according to instrument manufacturer's instructions.
8. Wash slides with ImmunoDNA washer or DI water.
9. Continue IHC staining protocol. Wash slides between each step with ImmunoDNA washer solution.

## Abbreviated Immunohistochemical Protocol

Step	ImmunoDetector AP/HRP	PolyDetector AP/HRP	PolyDetector Plus HRP
Peroxidase/AP Blocker	5 min.	5 min.	5 min
Primary Antibody	30-60 min.	30-60 min.	30-60 min.
1st Step Detection	10 min.	30-45 min.	15 min.
2nd Step Detection	10 min.	Not Applicable	15 min.
Substrate-Chromogen	5-10 min.	5-10 min.	5-10 min.
Counterstain / Coverslip	Varies	Varies	Varies

## Mounting Protocols

For detailed instructions using biodegradable permanent mounting media such as XyGreen PermaMounter (BSB 0169-0174) or organic solvent-based resin such as PermaMounter (BSB 0094-0097), refer to PI0174 or PI0097.


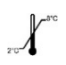





## Product Limitations

Due to inherent variability present in immunohistochemical procedures (including fixation time of tissues, dilution factor of antibody, retrieval method utilized and incubation time), optimal performance should be established through the use of positive and negative controls. Results should be interpreted by a qualified medical professional.

## References

1. Huynh KD, et al. BCOR, a novel corepressor involved in BCL-6 repression. *Genes Dev.* 2000; 14(14), 1810–1823.
2. Astolfe A, et al. BCOR involvement in cancer. *Epigenomics.* 2019 May; 11(7): 835–855.
3. Yu-Chien K, et al. BCOR Overexpression is a Highly Sensitive Marker in Round Cell Sarcomas with BCOR Genetic Abnormalities. *Am J Surg Pathol.* 2016 December; 40(12): 1670–1678.
4. Chiang, S., Lee, C., Stewart, C. et al. BCOR is a robust diagnostic immunohistochemical marker of genetically diverse high-grade endometrial stromal sarcoma, including tumors exhibiting variant morphology. *Mod Pathol.* 2017; 30, 1251–1261.
4. U.S. Department of Health and Human Services: Centers for Disease Control and Prevention. Guidelines for Safe Work Practices in Human and Animal Medical Diagnostic Laboratories. Supplement / Vol. 61, January 6, 2012.

## Symbol Key / Légende des symboles/Erläuterung der Symbole

	In Vitro Diagnostic Medical Device Dispositif médical de diagnostic in vitro In-Vitro-Diagnostikum		Storage Temperature Limites de température Zulässiger Temperaturbereich		Manufacturer Fabricant Hersteller		Catalog Number Référence du catalogue Bestellnummer
			Read Instructions for Use Consulter les instructions d'utilisation Gebrauchsanweisung beachten		Expiration Date Utiliser jusque Verwendbar bis		Lot Number Code du lot Chargenbezeichnung

**Bio SB**  
BIOSCIENCE FOR THE WORLD

5385 Hollister Ave. Building 8, #108, Santa Barbara CA 93111, USA  
Tel. (805) 692-2768 | Tel. (800) 561-1145 | Fax. (805) 692-2769  
E-mail: sales@biosb.com | Website: www.biosb.com