

## Tuberin/TSC2 Ab

[Images\(2\)](#)

Cat.#: AF4737  
Size: 100ul,200ul,50ul

Concn.: ~1mg/ml  
Source: Rabbit

Mol.Wt.: 200kDa  
Clonality: Polyclonal

**Application:** WB 1:500-1:2000, ELISA(peptide) 1:20000-1:40000  
\*The optimal dilutions SHOULD be determined by the end user.

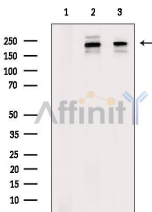
**Reactivity:** Human,Mouse,Rat

**Purification:** The antiserum was purified by peptide affinity chromatography using SulfoLink™ Coupling Resin (Thermo Fisher Scientific).

**Immunogen:** A synthesized peptide derived from human Tuberin/TSC2, corresponding to a region within the internal amino acids.

**Uniprot:** P49815

**Storage:** Rabbit IgG in phosphate buffered saline , pH 7.4, 150mM NaCl, 0.02% sodium azide and 50% glycerol. Store at -20 °C. Stable for 12 months from date of receipt.



Western blot analysis of extracts from various samples, using Tuberin/TSC2 Ab.

Lane 1: RAW264.7 cells, blocked with antigen-specific peptides,  
Lane 2: RAW264.7 cells,  
Lane 3: C6 cells.

**IMPORTANT:** For western blot, incubate membrane with diluted primary Ab in 5% w/v milk , 1X TBS, 0.1% Tween@20 at 4°C with gentle shaking, overnight.

For Research Use Only. Not for use in diagnostic and therapeutic procedures. Not for resale without express authorization.