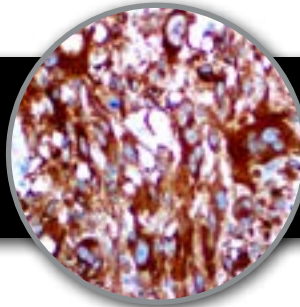


Melanoma Cocktail: HMB-45, MART-1, Tyrosinase
Clone: HMB-45, A103, BSB-6
 Mouse Monoclonal



Bio SB
 BIO SCIENCE FOR THE WORLD
 www.biosb.com

Inset: IHC of Melanoma Cocktail on a FFPE Melanoma Tissue

Intended Use

For In Vitro Diagnostic Use.

This antibody is intended for use in Immunohistochemical applications on formalin-fixed paraffin-embedded tissues (FFPE), frozen tissue sections and cell preparations. Interpretation of results should be performed by a qualified medical professional.

Immunogen

Pigmented melanoma metastases from lymph nodes (HMB45); Recombinant human Melan-A protein (A103) and Recombinant full length human tyrosinase protein (BSB-6).

Summary and Explanation

HMB-45 reacts against an antigen present in immature melanosomes, cutaneous, melanocytes, prenatal and infantile retinal pigment epithelium and melanoma cells. This antibody is very useful to identify Malignant Melanoma. MART-1/Melan-A is a protein antigen found on melanocytes. Antibodies against this antigen are used to recognize cells of melanocytic differentiation, useful for the diagnosis of Melanoma. The same name is used to refer to the gene which codes for this antigen. Tyrosinase is a copper-containing enzyme present in plant and animal tissues that catalyzes the production of melanin and other pigments from tyrosine by oxidation.

The MART-1/Melan-A antigen is specific for the melanocyte lineage found in normal skin, retina, and melanocytes, but not in other normal tissues. It is thus useful as a marker for Melanocytic Tumors, with the caveat that it is normally found in benign nevi as well. Anti-Tyrosinase has been found to be quite specific for melanotic lesions such as Malignant Melanoma and Melanotic Neurofibroma. Essentially no carcinomas express this marker. Melanoma cocktail HMB-45, Mart-1 and Tyrosinase are ideally suited to detect melanomas and melanocytic lesions and may prove to be a valuable marker for melanoma metastasis in sentinel lymph nodes.

| | | | |
|---------------------------|-----------------------|-------------------|-----------------------|
| Antibody Type | Mouse Monoclonal | Clone | HMB-45, A103, & BSB-6 |
| Isotype | IgG1/K, IgG1, & IgG2a | Reactivity | Paraffin, Frozen |
| Localization | Cytoplasmic | Control | Skin, Melanoma |
| Species Reactivity | Human, Dog | | |

Presentation

HMB-45 & Mart-1 & Tyrosinase comprise a mouse monoclonal antibody cocktail derived from cell culture supernatant that is concentrated, dialyzed, filter sterilized and diluted in buffer pH 7.5, containing BSA and sodium azide as a preservative.

Presentations

| Catalog Num. | Antibody Type | Dilution | Volume/Qty |
|--------------|------------------|----------------|------------|
| BSB 6877 | Tinto Prediluted | Ready-to-Use | 3.0 mL |
| BSB 6878 | Tinto Prediluted | Ready-to-Use | 7.0 mL |
| BSB 6879 | Tinto Prediluted | Ready-to-Use | 15.0 mL |
| BSB 6880 | Concentrated | 1:100 - 1:500 | 0.1 mL |
| BSB 6881 | Concentrated | 1:100 - 1:500 | 0.5 mL |
| BSB 6882 | Concentrated | 1:100 - 1:500 | 1.0 mL |
| BSB 6883 | Control Slides | Not Applicable | 5 slides |

Precautions

1. For professional users only. Ensure results are interpreted by a medical professional.
2. This product contains sodium azide (NaN₃), a toxic chemical which may react with plumbing to form highly explosive build-ups of metal azides. Upon disposal, flush with large volumes of water to prevent sodium azide build-up.
3. Ensure proper handling procedures are used with reagent. Always wear proper laboratory equipment such as laboratory coat and gloves when handling reagents.
4. Unused solution should be disposed of according to local and federal regulations.
5. Do not ingest reagent. If reagent ingested, contact a poison control center immediately.
6. For complete recommendations for handling biological specimens please refer to the CDC document, "Guidelines for Safe Work Practices in Human and Animal Medical Diagnostic Laboratories" (9).

Storage

Store at 2-8 °C. Do not use after expiration date listed on package label. Temperature fluctuations should be avoided. Store appropriately when not in use, and avoid prolonged exposure to room temperature conditions.

Specimen Preparation

Paraffin sections: The antibody can be used on formalin-fixed paraffin-embedded (FFPE) tissue sections. Ensure tissue undergoes appropriate fixation to ensure best results. Pre-treatment of tissues with heat-induced epitope retrieval (HIER) is recommended using Bio SB ImmunoDNA Retriever with Citrate (BSB 0020-BSB 0023), ImmunoDNA Retriever with EDTA (BSB 0030-BSB 0033) or ImmunoDNA Digestor (BSB 0108-0112). See reverse side for complete protocol. Tissue should remain hydrated via use of Bio SB Immuno/DNA Washer solutions (BSB 0029 & BSB 0042).

Frozen sections and cell preparations: The antibody can be used for labeling acetone-fixed frozen sections and acetone-fixed cell preparations.

Staining Procedure

1. Cut and mount 3-5 micron formalin-fixed paraffin-embedded tissues on positive charged slides such as Bio SB Hydrophilic Plus Slides (BSB 7028).
2. Air dry for 2 hours at 58° C.
3. Deparaffinize, dehydrate and rehydrate tissues.
4. Subject tissues to heat epitope retrieval using a suitable retrieval solution such as ImmunoDNA Retriever with Citrate (BSB 0020-BSB 0023) or EDTA (BSB 0030-BSB 0033).
5. Any of three heating methods may be used:

a. TintoRetriever Pressure Cooker or Equivalent

Place tissues/slides in a staining dish or coplin jar containing the ImmunoDNA Retriever with Citrate or EDTA, and place in the pressure cooker. Add 1-2 inches of distilled water to the pressure cooker and turn heat to high. Incubate for 15 minutes. Open and immediately transfer slides to room temperature.

b. TintoRetriever PT Module or Water Bath Method

Place tissues/slides in a pre-warmed staining dish or coplin jar containing the ImmunoDNA Retriever with Citrate or EDTA at 95°-99° C. Incubate for 30-60 minutes.

c. Conventional Steamer Method

Place tissues/slides in a pre-warmed staining dish or coplin jar containing the ImmunoDNA Retriever with Citrate or EDTA in a Steamer, cover and steam for 30-60 minutes.

6. After heat treatment, transfer slides in ImmunoDNA Retriever with Citrate or EDTA to room temperature and let stand for 15-20 minutes.
7. For manual staining, perform antibody incubation at ambient temperature. For automated staining methods, perform antibody incubation according to instrument manufacturer's instructions.
8. Wash slides with IHC wash buffer or DI water.
9. Continue IHC staining protocol.

Recommended IHC Protocol

| Step | ImmunoDetector AP/HRP | PolyDetector AP/HRP | PolyDetector Plus HRP |
|-----------------------|-----------------------|---------------------|-----------------------|
| Peroxidase/AP Blocker | 5 min. | 5 min. | 5 min |
| Primary Antibody | 30-60 min. | 30-60 min. | 30-60 min. |
| 1st Step Detection | 10 min. | 30-45 min. | 15 min. |
| 2nd Step Detection | 10 min. | Not Applicable | 15 min. |
| Substrate-Chromogen | 5-10 min. | 5-10 min. | 5-10 min. |
| Counterstain | Varies | Varies | Varies |

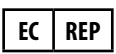







Product Limitations

Due to inherent variability present in immunohistochemical procedures (including fixation time of tissues, dilution factor of antibody, retrieval method utilized and incubation time), optimal performance should be established through the use of positive and negative controls. Results should be interpreted by a medical professional.

References

1. Kageshita T, Kawakami Y, et al. J Immunother. 1997;Nov;20(6):460-5
2. Fetsch PA, Marincola FM, et al. Cancer. 1999;Feb25:87(1):37-42
3. Bergman R, Azzam H, et al. J Am Acad Dermatol. 2000;Mar;42(3):496-500
4. Orsz Z, Histopathology. 1999;Jun;34(6):517-25
5. Kaufmann O, et al. Mod Pathol. 1998;Aug;11(8):740-6
6. Busam KJ, et al. Am J Dermatopathol. 2000;June;22(3):237-41
7. Jungbluth AA, et al. Pathol Res Pract. 2000;196(4):235-42
8. Meije CB, et al. J Pathol. 2000;Apr;190(5):572-8
9. U.S. Department of Health and Human Services: Centers for Disease Control and Prevention. Guidelines for Safe Work Practices in Human and Animal Medical Diagnostic Laboratories. Supplement / Vol. 61, January 6, 2012.

Symbol Key / Légende des symboles/Erläuterung der Symbole

| | | | | | | | |
|---|--|---|--|--|--|---|---|
|  | EMERGO EUROPE Prinsessegracht 20 2514 AP The Hague The Netherlands |  | Storage Temperature Limites de température Zulässiger Temperaturbereich |  | Manufacturer Fabricant Hersteller |  | Catalog Number Référence du catalogue Bestellnummer |
|  | In Vitro Diagnostic Medical Device Dispositif médical de diagnostic in vitro In-Vitro-Diagnostikum |  | Read Instructions for Use Consulter les instructions d'utilisation Gebrauchsanweisung beachten |  | Expiration Date Utiliser jusque Verwendbar bis |  | Lot Number Code du lot Chargenbezeichnung |



69 Santa Felicia Dr., Santa Barbara, CA 93117, USA
Tel: (805) 692-2768 | Tel: (800) 561-1145 | Fax: (805) 692-2769
E-mail: info@biosb.com | Website: www.biosb.com