

Phospho-TSC2-T1462 Rabbit pAb

Catalog No.: AP0866 **1 Publications**

Basic Information

Observed MW

200kDa

Calculated MW

25kDa/187-200kDa

Category

Primary antibody

Applications

WB

Cross-Reactivity

Human, Mouse

Background

Mutations in this gene lead to tuberous sclerosis complex. Its gene product is believed to be a tumor suppressor and is able to stimulate specific GTPases. The protein associates with hamartin in a cytosolic complex, possibly acting as a chaperone for hamartin. Alternative splicing results in multiple transcript variants encoding different isoforms.

Recommended Dilutions

WB 1:500 - 1:2000

Immunogen Information

Gene ID

7249

Swiss Prot

P49815

Immunogen

A synthetic phosphorylated peptide around T1462 of human TSC2 (NP_000539.2).

Synonyms

LAM;PPP1R160;TSC4;TSC2;Tuberin;tuberin

Contact

 | www.abclonal.com

Product Information

Source

Rabbit

Isotype

IgG

Purification

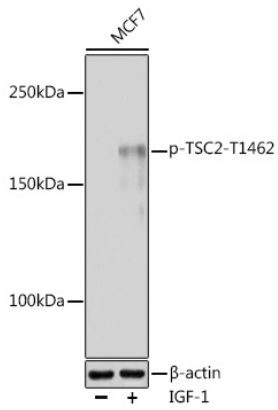
Affinity purification

Storage

Store at -20°C. Avoid freeze / thaw cycles.

Buffer: PBS with 0.01% thiomersal, 50% glycerol, pH7.3.

Validation Data



Western blot analysis of extracts of MCF7 cells, using Phospho-TSC2-T1462 antibody (AP0866) at 1:1000 dilution. MCF7 cells were treated by IGF-1 (50 ng/ml) at 37°C for 5 minutes after serum-starvation overnight.

Secondary antibody: HRP Goat Anti-Rabbit IgG (H+L) (AS014) at 1:10000 dilution.

Lysates/proteins: 25ug per lane.

Blocking buffer: 3% nonfat dry milk in TBST.

Detection: ECL Basic Kit (RM00020).

Exposure time: 60s.