

Phospho-CREB1-S142 Rabbit pAb

Catalog No.: AP0334

Basic Information

Observed MW

Refer to Figures

Calculated MW

25kDa/35kDa/36kDa

Category

Primary antibody

Applications

WB, IHC

Cross-Reactivity

Human, Mouse, Rat

Background

This gene encodes a transcription factor that is a member of the leucine zipper family of DNA binding proteins. This protein binds as a homodimer to the cAMP-responsive element, an octameric palindrome. The protein is phosphorylated by several protein kinases, and induces transcription of genes in response to hormonal stimulation of the cAMP pathway. Alternate splicing of this gene results in several transcript variants encoding different isoforms.

Recommended Dilutions

WB	1:500 - 1:1000
IHC	1:50 - 1:100

Immunogen Information

Gene ID	Swiss Prot
1385	P16220

Immunogen

A phospho specific peptide corresponding to residues surrounding S142 of human CREB1

Synonyms

CREB1;CREB;CREB-1

Contact

 | www.abclonal.com

Product Information

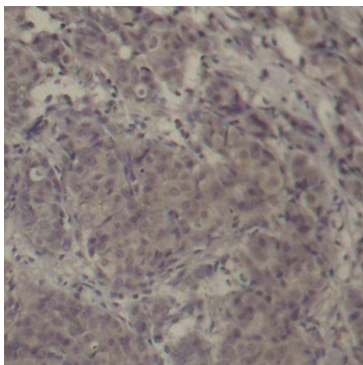
Source	Isotype	Purification
Rabbit	IgG	Affinity purification

Storage

Store at -20°C. Avoid freeze / thaw cycles.

Buffer: PBS with 0.02% sodium azide,50% glycerol,pH7.3.

Validation Data



Immunohistochemistry of paraffin-embedded human breast carcinoma using Phospho-CREB1-S142 antibody (AP0334).