

Phospho-ATF4-S245 Rabbit pAb

Catalog No.: AP0309

Basic Information

Observed MW

45kDa

Calculated MW

38kDa

Category

Primary antibody

Applications

WB,IHC

Cross-Reactivity

Human

Background

This gene encodes a transcription factor that was originally identified as a widely expressed mammalian DNA binding protein that could bind a tax-responsive enhancer element in the LTR of HTLV-1. The encoded protein was also isolated and characterized as the cAMP-response element binding protein 2 (CREB-2). The protein encoded by this gene belongs to a family of DNA-binding proteins that includes the AP-1 family of transcription factors, cAMP-response element binding proteins (CREBs) and CREB-like proteins. These transcription factors share a leucine zipper region that is involved in protein-protein interactions, located C-terminal to a stretch of basic amino acids that functions as a DNA binding domain. Two alternative transcripts encoding the same protein have been described. Two pseudogenes are located on the X chromosome at q28 in a region containing a large inverted duplication.

Recommended Dilutions

WB	1:500 - 1:2000
IHC	1:50 - 1:100

Immunogen Information

Gene ID	Swiss Prot
468	P18848

Immunogen

A phospho specific peptide corresponding to residues surrounding S245 of human ATF4

Synonyms

ATF4;CREB-2;CREB2;TAXREB67;TXREB

Contact

 | www.abclonal.com

Product Information

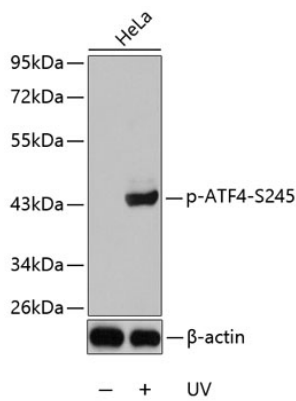
Source	Isotype	Purification
Rabbit	IgG	Affinity purification

Storage

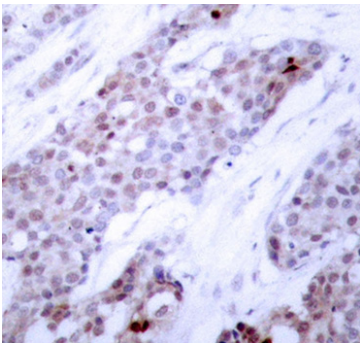
Store at -20°C. Avoid freeze / thaw cycles.

Buffer: PBS with 0.02% sodium azide,50% glycerol,pH7.3.

Validation Data



Western blot analysis of extracts from HeLa cells using Phospho-ATF4-S245 antibody (AP0309).
Secondary antibody: HRP Goat Anti-Rabbit IgG (H+L) (AS014) at 1:10000 dilution.
Lysates/proteins: 25ug per lane.
Blocking buffer: 3% BSA.



Immunohistochemistry of paraffin-embedded human breast carcinoma using Phospho-ATF4-S245 antibody (AP0309). Perform microwave antigen retrieval with 10 mM Tris/EDTA buffer pH 9.0 before commencing with IHC staining protocol.