

Phospho-STMN1-S25 Rabbit pAb

Catalog No.: AP0220 **1 Publications**

Basic Information

Observed MW

17kDa

Calculated MW

17kDa/19kDa

Category

Primary antibody

Applications

WB, IHC

Cross-Reactivity

Human, Mouse, Rat

Background

This gene belongs to the stathmin family of genes. It encodes a ubiquitous cytosolic phosphoprotein proposed to function as an intracellular relay integrating regulatory signals of the cellular environment. The encoded protein is involved in the regulation of the microtubule filament system by destabilizing microtubules. It prevents assembly and promotes disassembly of microtubules. Multiple transcript variants encoding different isoforms have been found for this gene.

Recommended Dilutions

WB	1:500 - 1:2000
IHC	1:50 - 1:100

Immunogen Information

Gene ID	Swiss Prot
3925	P16949

Immunogen

A synthetic phosphorylated peptide around S25 of human Stathmin 1 (NP_005554.1).

Synonyms

STMN1;C1orf215;LAP18;Lag;OP18;PP17;PP19;PR22;SMN;stathmin

Contact

 | www.abclonal.com

Product Information

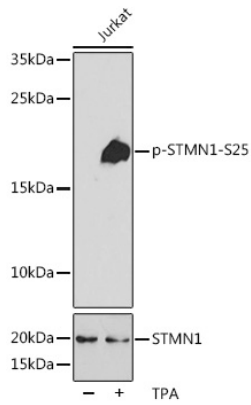
Source	Isotype	Purification
Rabbit	IgG	Affinity purification

Storage

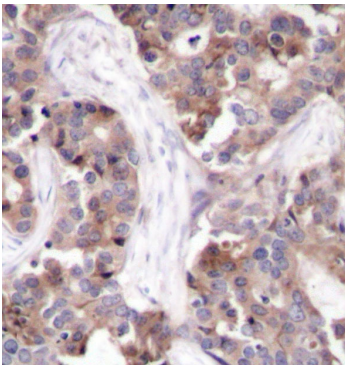
Store at -20°C. Avoid freeze / thaw cycles.

Buffer: PBS with 0.01% thiomersal, 50% glycerol, pH7.3.

Validation Data



Western blot analysis of extracts of Jurkat cells, using Phospho-STMN1-S25 pAb (AP0220) at 1:2000 dilution or STMN1 antibody (A14018). Jurkat cells were treated by PMA/TPA (200nM) for 10 minutes. Secondary antibody: HRP Goat Anti-Rabbit IgG (H+L) (AS014) at 1:10000 dilution. Lysates/proteins: 25ug per lane. Blocking buffer: 3% BSA. Detection: ECL Basic Kit (RM00020). Exposure time: 10s.



Immunohistochemistry of paraffin-embedded human breast carcinoma using Phospho-STMN1-S25 antibody (AP0220).