

# Tropomyosin 1 Rabbit mAb

Catalog No.: A8723 **Recombinant**

## Basic Information

### Observed MW

37kDa

### Calculated MW

33kDa

### Category

Primary antibody

### Applications

WB,IHC,IF/ICC,IP

### Cross-Reactivity

Mouse, Rat

### CloneNo number

ARC1283

## Recommended Dilutions

<b>WB</b>	1:500 - 1:2000
<b>IHC</b>	1:50 - 1:200
<b>IF/ICC</b>	1:50 - 1:200
<b>IP</b>	1:50 - 1:200

## Contact

 | [www.abclonal.com](http://www.abclonal.com)

## Background

This gene is a member of the tropomyosin family of highly conserved, widely distributed actin-binding proteins involved in the contractile system of striated and smooth muscles and the cytoskeleton of non-muscle cells. Tropomyosin is composed of two alpha-helical chains arranged as a coiled-coil. It is polymerized end to end along the two grooves of actin filaments and provides stability to the filaments. The encoded protein is one type of alpha helical chain that forms the predominant tropomyosin of striated muscle, where it also functions in association with the troponin complex to regulate the calcium-dependent interaction of actin and myosin during muscle contraction. In smooth muscle and non-muscle cells, alternatively spliced transcript variants encoding a range of isoforms have been described. Mutations in this gene are associated with type 3 familial hypertrophic cardiomyopathy. [provided by RefSeq, Jul 2008]

## Immunogen Information

<b>Gene ID</b>	<b>Swiss Prot</b>
7168	P09493

### Immunogen

A synthetic peptide corresponding to a sequence within amino acids 185-284 of human Tropomyosin 1 (P09493).

### Synonyms

C15orf13; CMD1Y; CMH3; HEL-S-265; HTM-alpha; LVNC9; TMSA

## Product Information

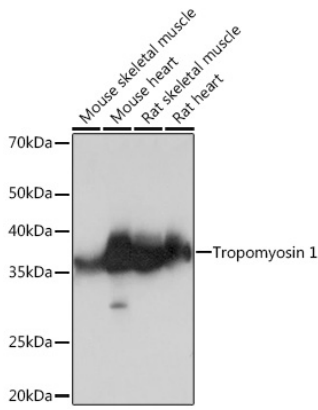
<b>Source</b>	<b>Isotype</b>	<b>Purification</b>
Rabbit	IgG	Affinity purification

### Storage

Store at -20°C. Avoid freeze / thaw cycles.

Buffer: PBS with 0.01% thiomersal,0.05% BSA,50% glycerol,pH7.3.

## Validation Data



Western blot analysis of extracts of various cell lines, using Tropomyosin 1 Rabbit mAb (A8723) at 1:1000 dilution.

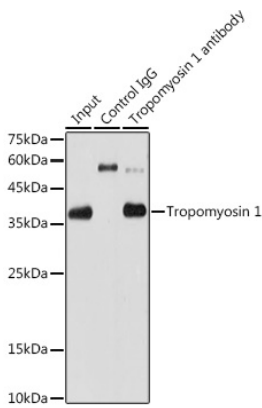
Secondary antibody: HRP Goat Anti-Rabbit IgG (H+L) (AS014) at 1:10000 dilution.

Lysates/proteins: 25ug per lane.

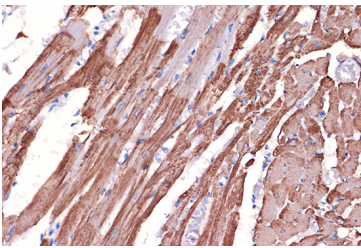
Blocking buffer: 3% nonfat dry milk in TBST.

Detection: ECL Basic Kit (RM00020).

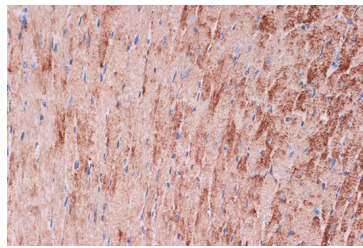
Exposure time: 3s.



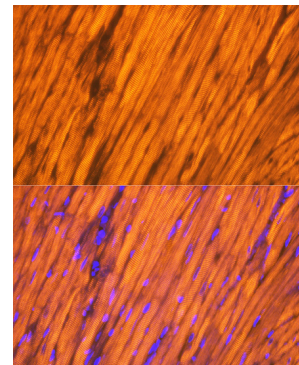
Immunoprecipitation analysis of 600ug extracts of Rat heart cells using 3ug Tropomyosin 1 antibody (A8723). Western blot was performed from the immunoprecipitate using Tropomyosin 1 antibody (A8723) at a dilution of 1:1000.



Immunohistochemistry of paraffin-embedded rat heart using Tropomyosin 1 Rabbit mAb (A8723) at dilution of 1:100 (40x lens). Perform microwave antigen retrieval with 10 mM Tris/EDTA buffer pH 9.0 before commencing with IHC staining protocol.



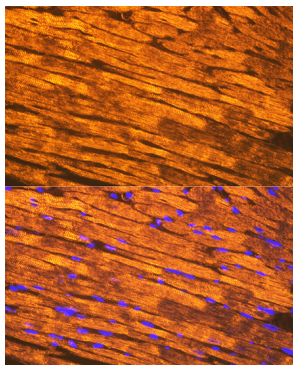
Immunohistochemistry of paraffin-embedded mouse heart using Tropomyosin 1 Rabbit mAb (A8723) at dilution of 1:100 (40x lens). Perform microwave antigen retrieval with 10 mM Tris/EDTA buffer pH 9.0 before commencing with IHC staining protocol.



Immunofluorescence analysis of rat heart using Tropomyosin 1 Rabbit mAb (A8723) at dilution of 1:100 (40x lens). Blue: DAPI for nuclear staining.

## Validation Data

---



Immunofluorescence analysis of mouse heart using Tropomyosin 1 Rabbit mAb (A8723) at dilution of 1:100 (40x lens).  
Blue: DAPI for nuclear staining.