

eIF2B epsilon (EIF2B5) Rabbit mAb

Catalog No.: A8670 **Recombinant**

Basic Information

Observed MW

80kDa

Calculated MW

80kDa

Category

Primary antibody

Applications

WB, IHC, IF/ICC

Cross-Reactivity

Human, Mouse, Rat

CloneNo number

ARC1774

Background

This gene encodes one of five subunits of eukaryotic translation initiation factor 2B (EIF2B), a GTP exchange factor for eukaryotic initiation factor 2 and an essential regulator for protein synthesis. Mutations in this gene and the genes encoding other EIF2B subunits have been associated with leukoencephalopathy with vanishing white matter. [provided by RefSeq, Nov 2009]

Recommended Dilutions

WB	1:500 - 1:2000
IHC	1:50 - 1:200
IF/ICC	1:50 - 1:200

Immunogen Information

Gene ID

8893

Swiss Prot

Q13144

Immunogen

A synthetic peptide corresponding to a sequence within amino acids 1-100 of human eIF2B epsilon (EIF2B5) (Q13144).

Synonyms

CACH; CLE; EIF-2B; EIF2Bepsilon; LVWM

Contact

 | www.abclonal.com

Product Information

Source

Rabbit

Isotype

IgG

Purification

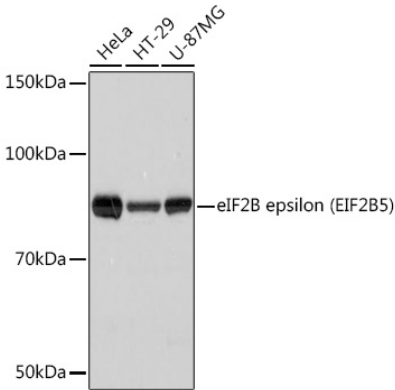
Affinity purification

Storage

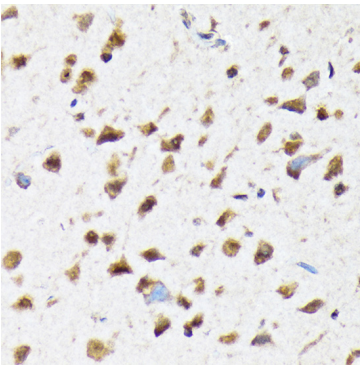
Store at -20°C. Avoid freeze / thaw cycles.

Buffer: PBS with 0.01% thiomersal, 0.05% BSA, 50% glycerol, pH7.3.

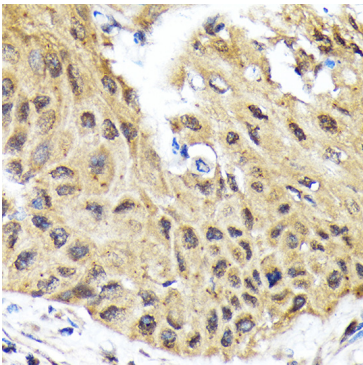
Validation Data



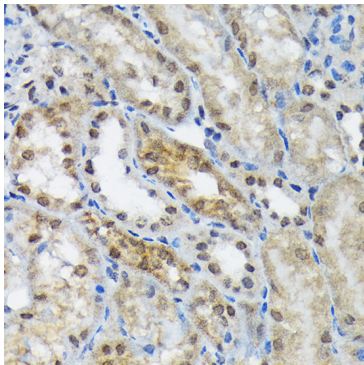
Western blot analysis of extracts of various cell lines, using eIF2B epsilon (EIF2B5) (EIF2B5) Rabbit mAb (A8670) at 1:1000 dilution.
Secondary antibody: HRP Goat Anti-Rabbit IgG (H+L) (A5014) at 1:10000 dilution.
Lysates/proteins: 25ug per lane.
Blocking buffer: 3% nonfat dry milk in TBST.
Detection: ECL Basic Kit (RM00020).
Exposure time: 3s.



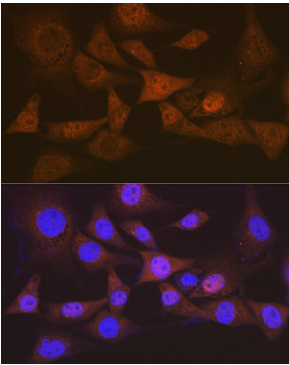
Immunohistochemistry of paraffin-embedded rat brain using eIF2B epsilon (EIF2B5) (EIF2B5) Rabbit mAb (A8670) at dilution of 1:100 (40x lens).Perform microwave antigen retrieval with 10 mM Tris/EDTA buffer pH 9.0 before commencing with IHC staining protocol.



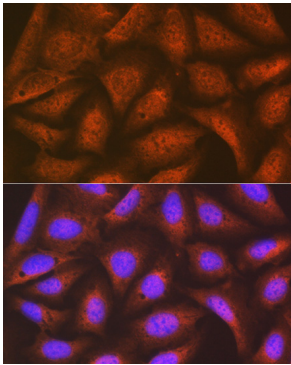
Immunohistochemistry of paraffin-embedded human lung cancer using eIF2B epsilon (EIF2B5) (EIF2B5) Rabbit mAb (A8670) at dilution of 1:100 (40x lens).Perform microwave antigen retrieval with 10 mM Tris/EDTA buffer pH 9.0 before commencing with IHC staining protocol.



Immunohistochemistry of paraffin-embedded mouse kidney using eIF2B epsilon (EIF2B5) (EIF2B5) Rabbit mAb (A8670) at dilution of 1:100 (40x lens).Perform microwave antigen retrieval with 10 mM Tris/EDTA buffer pH 9.0 before commencing with IHC staining protocol.



Immunofluorescence analysis of NIH-3T3 cells using eIF2B epsilon (EIF2B5) (EIF2B5) Rabbit mAb (A8670) at dilution of 1:100 (40x lens). Blue: DAPI for nuclear staining.



Immunofluorescence analysis of U-2 OS cells using eIF2B epsilon (EIF2B5) (EIF2B5) Rabbit mAb (A8670) at dilution of 1:100 (40x lens). Blue: DAPI for nuclear staining.