

GPR22 Rabbit pAb

Catalog No.: A18313

Basic Information

Observed MW

55kDa

Calculated MW

49kDa

Category

Primary antibody

Applications

WB,IF/ICC

Cross-Reactivity

Human, Mouse, Rat

Background

This gene is a member of the G-protein coupled receptor 1 family and encodes a multi-pass membrane protein.

Recommended Dilutions

WB 1:500 - 1:2000

IF/ICC 1:50 - 1:200

Immunogen Information

Gene ID

2845

Swiss Prot

Q99680

Immunogen

A synthetic peptide corresponding to a sequence within amino acids 1-100 of human GPR22 (NP_005286.2).

Synonyms

GPR22

Contact

 | www.abclonal.com

Product Information

Source

Rabbit

Isotype

IgG

Purification

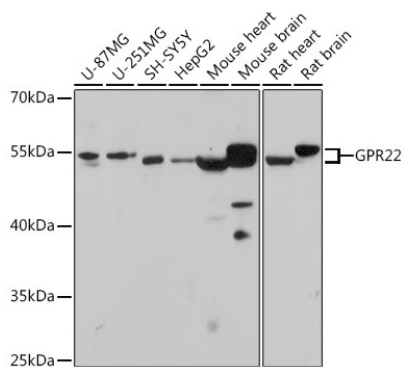
Affinity purification

Storage

Store at -20°C. Avoid freeze / thaw cycles.

Buffer: PBS with 0.01% thiomersal, 50% glycerol, pH7.3.

Validation Data



Western blot analysis of extracts of various cell lines, using GPR22 antibody (A18313) at 1:1000 dilution.

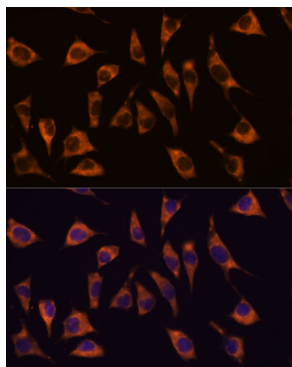
Secondary antibody: HRP Goat Anti-Rabbit IgG (H+L) (AS014) at 1:10000 dilution.

Lysates/proteins: 25ug per lane.

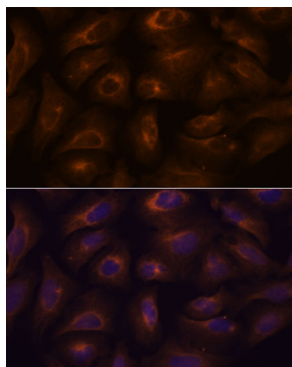
Blocking buffer: 3% nonfat dry milk in TBST.

Detection: ECL Basic Kit (RM00020).

Exposure time: 90s.



Immunofluorescence analysis of L929 cells using GPR22 antibody (A18313) at dilution of 1:100. Blue: DAPI for nuclear staining.



Immunofluorescence analysis of U-2 OS cells using GPR22 antibody (A18313) at dilution of 1:100. Blue: DAPI for nuclear staining.