

TCEB1 Rabbit pAb

Catalog No.: A1989

Basic Information

Observed MW

12kDa

Calculated MW

10kDa/12kDa

Category

Primary antibody

Applications

WB, IHC

Cross-Reactivity

Human, Mouse, Rat

Background

This gene encodes the protein elongin C, which is a subunit of the transcription factor B (SIII) complex. The SIII complex is composed of elongins A/A2, B and C. It activates elongation by RNA polymerase II by suppressing transient pausing of the polymerase at many sites within transcription units. Elongin A functions as the transcriptionally active component of the SIII complex, whereas elongins B and C are regulatory subunits. Elongin A2 is specifically expressed in the testis, and capable of forming a stable complex with elongins B and C. The von Hippel-Lindau tumor suppressor protein binds to elongins B and C, and thereby inhibits transcription elongation. Multiple alternatively spliced transcript variants encoding two distinct isoforms have been identified.

Recommended Dilutions

WB	1:500 - 1:2000
IHC	1:50 - 1:100

Immunogen Information

Gene ID	Swiss Prot
6921	Q15369

Immunogen

Recombinant fusion protein containing a sequence corresponding to amino acids 1-112 of human TCEB1 (NP_001191791.1).

Synonyms

ELOC;SIII;TCEB1;eloC;elongin-C

Contact

 | www.abclonal.com

Product Information

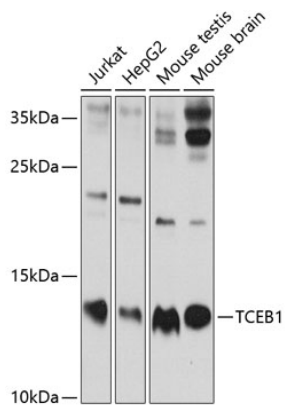
Source	Isotype	Purification
Rabbit	IgG	Affinity purification

Storage

Store at -20°C. Avoid freeze / thaw cycles.

Buffer: PBS with 0.02% sodium azide,50% glycerol,pH7.3.

Validation Data



Western blot analysis of extracts of various cell lines, using TCEB1 antibody (A1989) at 1:1000 dilution.

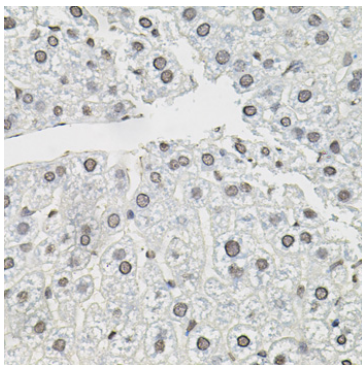
Secondary antibody: HRP Goat Anti-Rabbit IgG (H+L) (AS014) at 1:10000 dilution.

Lysates/proteins: 25ug per lane.

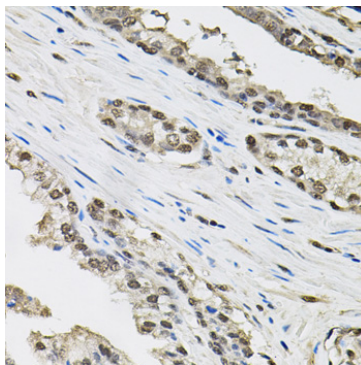
Blocking buffer: 3% nonfat dry milk in TBST.

Detection: ECL Enhanced Kit (RM00021).

Exposure time: 60s.



Immunohistochemistry of paraffin-embedded mouse liver using TCEB1 antibody (A1989) (40x lens).



Immunohistochemistry of paraffin-embedded human prostate using TCEB1 antibody (A1989) (40x lens).