

# β-TrCP/BTRC Rabbit pAb

Catalog No.: A18232 **1 Publications**

## Basic Information

### Observed MW

62kDa

### Calculated MW

68kDa

### Category

Primary antibody

### Applications

WB, IHC, IF/ICC

### Cross-Reactivity

Human, Mouse, Rat

## Background

This gene encodes a member of the F-box protein family which is characterized by an approximately 40 amino acid motif, the F-box. The F-box proteins constitute one of the four subunits of ubiquitin protein ligase complex called SCFs (SKP1-cullin-F-box), which function in phosphorylation-dependent ubiquitination. The F-box proteins are divided into 3 classes: Fbws containing WD-40 domains, Fbls containing leucine-rich repeats, and Fbxs containing either different protein-protein interaction modules or no recognizable motifs. The protein encoded by this gene belongs to the Fbws class; in addition to an F-box, this protein contains multiple WD-40 repeats. The encoded protein mediates degradation of CD4 via its interaction with HIV-1 Vpu. It has also been shown to ubiquitinate phosphorylated NFKBIA (nuclear factor of kappa light polypeptide gene enhancer in B-cells inhibitor, alpha), targeting it for degradation and thus activating nuclear factor kappa-B. Alternatively spliced transcript variants have been described. A related pseudogene exists in chromosome 6.

## Recommended Dilutions

|               |                |
|---------------|----------------|
| <b>WB</b>     | 1:500 - 1:2000 |
| <b>IHC</b>    | 1:50 - 1:200   |
| <b>IF/ICC</b> | 1:50 - 1:200   |

## Immunogen Information

|                |                   |
|----------------|-------------------|
| <b>Gene ID</b> | <b>Swiss Prot</b> |
| 8945           | Q9Y297            |

### Immunogen

Recombinant fusion protein containing a sequence corresponding to amino acids 1-120 of human β-TrCP/BTRC (NP\_378663.1).

### Synonyms

BTRC;BETA-TRCP;FBW1A;FBXW1;FBXW1A;FWD1;bTrCP;bTrCP1;betaTrCP;Beta-TRCP

## Contact

 | [www.abclonal.com](http://www.abclonal.com)

## Product Information

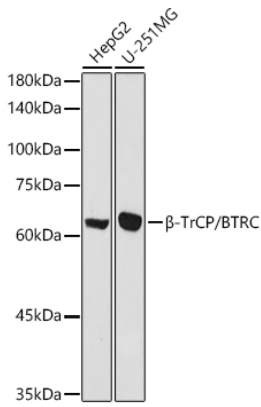
|               |                |                       |
|---------------|----------------|-----------------------|
| <b>Source</b> | <b>Isotype</b> | <b>Purification</b>   |
| Rabbit        | IgG            | Affinity purification |

### Storage

Store at -20°C. Avoid freeze / thaw cycles.

Buffer: PBS with 0.05% proclin300,50% glycerol,pH7.3.

## Validation Data



Western blot analysis of extracts of various cell lines, using  $\beta$ -TrCP/BTRC antibody (A18232) at 1:1000 dilution.

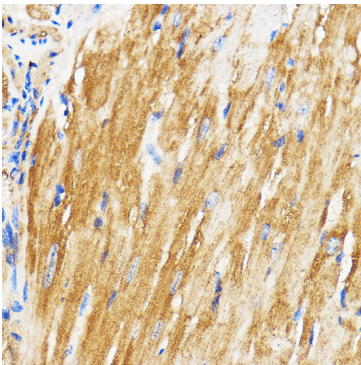
Secondary antibody: HRP Goat Anti-Rabbit IgG (H+L) (AS014) at 1:10000 dilution.

Lysates/proteins: 25ug per lane.

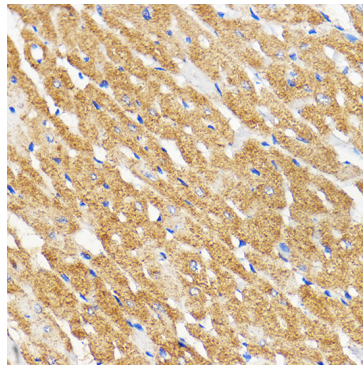
Blocking buffer: 3% nonfat dry milk in TBST.

Detection: ECL Basic Kit (RM00020).

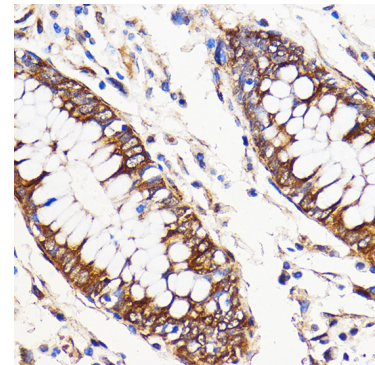
Exposure time: 30s.



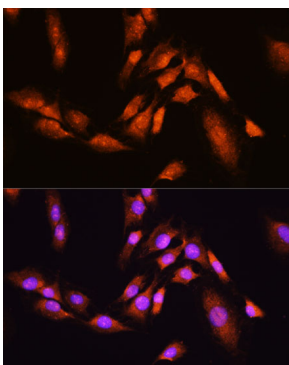
Immunohistochemistry of paraffin-embedded Mouse heart using  $\beta$ -TrCP/BTRC Rabbit pAb (A18232) at dilution of 1:100 (40x lens). Perform microwave antigen retrieval with 10 mM PBS buffer pH 7.2 before commencing with IHC staining protocol.



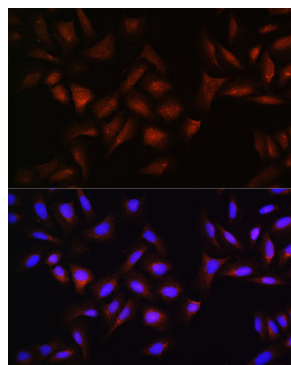
Immunohistochemistry of paraffin-embedded Rat heart using  $\beta$ -TrCP/BTRC Rabbit pAb (A18232) at dilution of 1:100 (40x lens). Perform microwave antigen retrieval with 10 mM PBS buffer pH 7.2 before commencing with IHC staining protocol.



Immunohistochemistry of paraffin-embedded Human colon using  $\beta$ -TrCP/BTRC Rabbit pAb (A18232) at dilution of 1:100 (40x lens). Perform microwave antigen retrieval with 10 mM PBS buffer pH 7.2 before commencing with IHC staining protocol.



Immunofluorescence analysis of C6 cells using  $\beta$ -TrCP/BTRC antibody (A18232) at dilution of 1:100. Blue: DAPI for nuclear staining.



Immunofluorescence analysis of U-2 OS cells using  $\beta$ -TrCP/BTRC antibody (A18232) at dilution of 1:100. Blue: DAPI for nuclear staining.