

THOC6 Rabbit pAb

Catalog No.: A17766

Basic Information

Observed MW

38kDa

Calculated MW

32kDa/34kDa/37kDa

Category

Primary antibody

Applications

WB

Cross-Reactivity

Human, Mouse

Background

This gene encodes a subunit of the multi-protein THO complex, which is involved in coordination between transcription and mRNA processing. The THO complex is a component of the TREX (transcription/export) complex, which is involved in transcription and export of mRNAs. A missense mutation in this gene is associated with a neurodevelopmental disorder called Beaulieu-Boycott-Innes syndrome. [provided by RefSeq, Dec 2016]

Recommended Dilutions

WB 1:500 - 1:2000

Immunogen Information

Gene ID

79228

Swiss Prot

Q86W42

Immunogen

A synthetic peptide corresponding to a sequence within amino acids 50-150 of human THOC6 (NP_077315.2).

Synonyms

THOC6;WDR58;fSAP35;BBIS

Contact

 | www.abclonal.com

Product Information

Source

Rabbit

Isotype

IgG

Purification

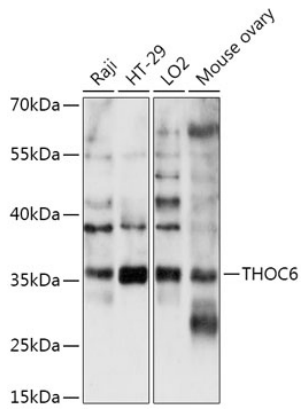
Affinity purification

Storage

Store at -20°C. Avoid freeze / thaw cycles.

Buffer: PBS with 0.01% thiomersal, 50% glycerol, pH7.3.

Validation Data



Western blot analysis of extracts of various cell lines, using THOC6 antibody (A17766) at 1:1000 dilution.

Secondary antibody: HRP Goat Anti-Rabbit IgG (H+L) (AS014) at 1:10000 dilution.

Lysates/proteins: 25ug per lane.

Blocking buffer: 3% nonfat dry milk in TBST.

Detection: ECL Basic Kit (RM00020).

Exposure time: 180s.