

MSH6 Rabbit pAb

Catalog No.: A16381

Basic Information

Observed MW

Refer to figures

Calculated MW

119kDa/120kDa/137kDa/152kDa

Category

Primary antibody

Applications

WB,IHC,IF/ICC

Cross-Reactivity

Human, Mouse, Rat

Background

This gene encodes a member of the DNA mismatch repair MutS family. In *E. coli*, the MutS protein helps in the recognition of mismatched nucleotides prior to their repair. A highly conserved region of approximately 150 aa, called the Walker-A adenine nucleotide binding motif, exists in MutS homologs. The encoded protein heterodimerizes with MSH2 to form a mismatch recognition complex that functions as a bidirectional molecular switch that exchanges ADP and ATP as DNA mismatches are bound and dissociated. Mutations in this gene may be associated with hereditary nonpolyposis colon cancer, colorectal cancer, and endometrial cancer. Transcripts variants encoding different isoforms have been described.

Recommended Dilutions

WB	1:500 - 1:2000
IHC	1:50 - 1:200
IF/ICC	1:50 - 1:200

Immunogen Information

Gene ID	Swiss Prot
2956	P52701

Immunogen

Recombinant fusion protein containing a sequence corresponding to amino acids 1-290 of human MSH6 (NP_000170.1).

Synonyms

MSH6;GTBP;GTMBP;HNPCC5;HSAP;p160

Contact

 | www.abclonal.com

Product Information

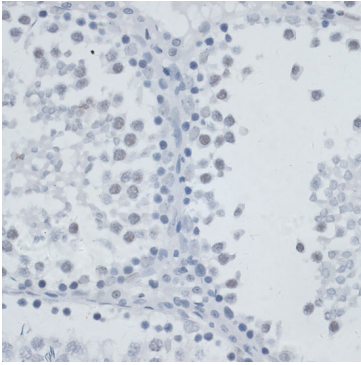
Source	Isotype	Purification
Rabbit	IgG	Affinity purification

Storage

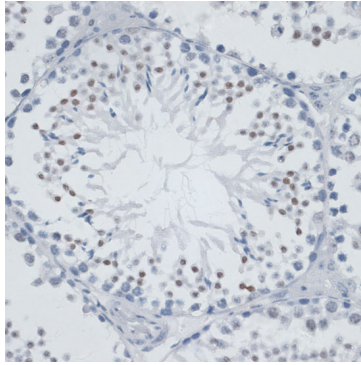
Store at -20°C. Avoid freeze / thaw cycles.

Buffer: PBS with 0.02% sodium azide,50% glycerol,pH7.3.

Validation Data



Immunohistochemistry of paraffin-embedded rat testis using MSH6 antibody (A16381) at dilution of 1:100 (40x lens). Perform microwave antigen retrieval with 10 mM PBS buffer pH 7.2 before commencing with IHC staining protocol.



Immunohistochemistry of paraffin-embedded mouse testis using MSH6 antibody (A16381) at dilution of 1:100 (40x lens). Perform microwave antigen retrieval with 10 mM PBS buffer pH 7.2 before commencing with IHC staining protocol.