

SAG Rabbit pAb

Catalog No.: A13045

Basic Information

Observed MW

52kDa

Calculated MW

45kDa

Category

Primary antibody

Applications

WB, IHC

Cross-Reactivity

Mouse, Rat

Background

Members of arrestin/beta-arrestin protein family are thought to participate in agonist-mediated desensitization of G-protein-coupled receptors and cause specific dampening of cellular responses to stimuli such as hormones, neurotransmitters, or sensory signals. S-arrestin, also known as S-antigen, is a major soluble photoreceptor protein that is involved in desensitization of the photoactivated transduction cascade. It is expressed in the retina and the pineal gland and inhibits coupling of rhodopsin to transducin in vitro. Additionally, S-arrestin is highly antigenic, and is capable of inducing experimental autoimmune uveoretinitis. Mutations in this gene have been associated with Oguchi disease, a rare autosomal recessive form of night blindness.

Recommended Dilutions

WB	1:1000 - 1:2000
IHC	1:50 - 1:200

Immunogen Information

Gene ID

6295

Swiss Prot

P10523

Immunogen

Recombinant fusion protein containing a sequence corresponding to amino acids 1-405 of human SAG (NP_000532.2).

Synonyms

SAG;RP47;S-AG

Contact

 | www.abclonal.com

Product Information

Source

Rabbit

Isotype

IgG

Purification

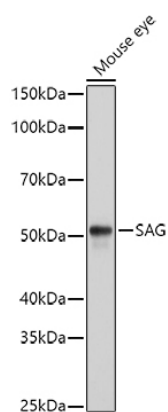
Affinity purification

Storage

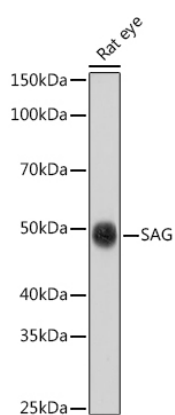
Store at -20°C. Avoid freeze / thaw cycles.

Buffer: PBS with 0.01% thiomersal, 50% glycerol, pH7.3.

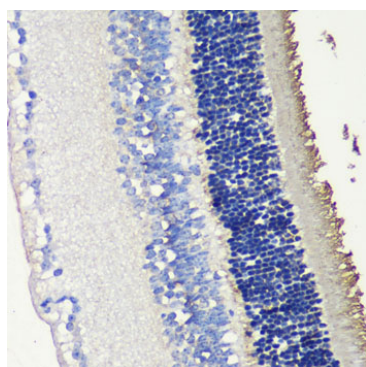
Validation Data



Western blot analysis of extracts of Mouse eye cells, using SAG antibody (A13045) at 1:1000 dilution.
Secondary antibody: HRP Goat Anti-Rabbit IgG (H+L) (AS014) at 1:10000 dilution.
Lysates/proteins: 25ug per lane.
Blocking buffer: 3% nonfat dry milk in TBST.
Detection: ECL Basic Kit (RM00020).
Exposure time: 1s.



Western blot analysis of extracts of Rat eye cells, using SAG antibody (A13045) at 1:1000 dilution.
Secondary antibody: HRP Goat Anti-Rabbit IgG (H+L) (AS014) at 1:10000 dilution.
Lysates/proteins: 25ug per lane.
Blocking buffer: 3% nonfat dry milk in TBST.
Detection: ECL Basic Kit (RM00020).
Exposure time: 30s.



Immunohistochemistry of paraffin-embedded mouse retina using SAG antibody (A13045) at dilution of 1:200 (40x lens).