

# MSH6 Rabbit pAb

Catalog No.: A0983

## Basic Information

### Observed MW

150KDa

### Calculated MW

119kDa/120kDa/137kDa/152kDa

### Category

Primary antibody

### Applications

WB,IHC,IF/ICC

### Cross-Reactivity

Human, Mouse, Rat, Monkey

## Background

This gene encodes a member of the DNA mismatch repair MutS family. In *E. coli*, the MutS protein helps in the recognition of mismatched nucleotides prior to their repair. A highly conserved region of approximately 150 aa, called the Walker-A adenine nucleotide binding motif, exists in MutS homologs. The encoded protein heterodimerizes with MSH2 to form a mismatch recognition complex that functions as a bidirectional molecular switch that exchanges ADP and ATP as DNA mismatches are bound and dissociated. Mutations in this gene may be associated with hereditary nonpolyposis colon cancer, colorectal cancer, and endometrial cancer. Transcripts variants encoding different isoforms have been described.

## Recommended Dilutions

WB	1:500 - 1:2000
IHC	1:50 - 1:200
IF/ICC	1:20 - 1:100

## Immunogen Information

<b>Gene ID</b>	<b>Swiss Prot</b>
2956	P52701

### Immunogen

A synthetic peptide corresponding to a sequence within amino acids 1-100 of human MSH6 (NP\_000170.1).

### Synonyms

MSH6;GTBP;GTMBP;HNPCC5;HSAP;p160

## Contact

 | [www.abclonal.com](http://www.abclonal.com)

## Product Information

<b>Source</b>	<b>Isotype</b>	<b>Purification</b>
Rabbit	IgG	Affinity purification

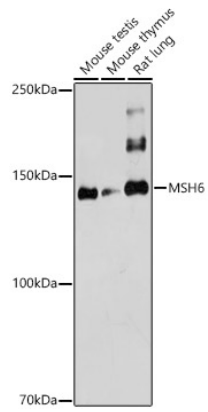
### Storage

Store at -20°C. Avoid freeze / thaw cycles.

Buffer: PBS with 0.01% thiomersal,50% glycerol,pH7.3.

## Validation Data

---



Western blot analysis of extracts of various cell lines, using MSH6 antibody (A0983) at 1:1000 dilution.  
Secondary antibody: HRP Goat Anti-Rabbit IgG (H+L) (AS014) at 1:10000 dilution.  
Lysates/proteins: 25ug per lane.  
Blocking buffer: 3% nonfat dry milk in TBST.  
Detection: ECL Basic Kit (RM00020).  
Exposure time: 180s.