

# DRD4 Rabbit pAb

Catalog No.: A1337 **1 Publications**

## Basic Information

**Observed MW**

52kDa

**Calculated MW**

48kDa

**Category**

Primary antibody

**Applications**

WB, IHC

**Cross-Reactivity**

Mouse, Rat

## Background

This gene encodes the D4 subtype of the dopamine receptor. The D4 subtype is a G-protein coupled receptor which inhibits adenylyl cyclase. It is a target for drugs which treat schizophrenia and Parkinson disease. Mutations in this gene have been associated with various behavioral phenotypes, including autonomic nervous system dysfunction, attention deficit/hyperactivity disorder, and the personality trait of novelty seeking. This gene contains a polymorphic number (2-10 copies) of tandem 48 nt repeats; the sequence shown contains four repeats.

## Recommended Dilutions

<b>WB</b>	1:500 - 1:1000
<b>IHC</b>	1:50 - 1:200

## Immunogen Information

<b>Gene ID</b>	<b>Swiss Prot</b>
1815	P21917

**Immunogen**

A synthetic peptide corresponding to a sequence within amino acids 100-200 of human DRD4 (NP\_000788.2).

**Synonyms**

DRD4;D4DR

## Contact

 | [www.abclonal.com](http://www.abclonal.com)

## Product Information

<b>Source</b>	<b>Isotype</b>	<b>Purification</b>
Rabbit	IgG	Affinity purification

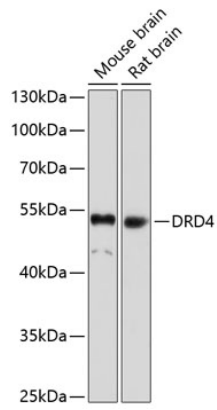
**Storage**

Store at -20°C. Avoid freeze / thaw cycles.

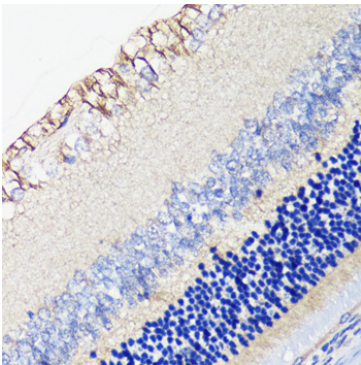
Buffer: PBS with 0.02% sodium azide, 50% glycerol, pH7.3.

## Validation Data

---



Western blot analysis of extracts of various cell lines, using DRD4 antibody (A1337) at 1:1000 dilution.  
Secondary antibody: HRP Goat Anti-Rabbit IgG (H+L) (AS014) at 1:10000 dilution.  
Lysates/proteins: 25ug per lane.  
Blocking buffer: 3% nonfat dry milk in TBST.  
Detection: ECL Basic Kit (RM00020).  
Exposure time: 90s.



Immunohistochemistry of paraffin-embedded rat retina using DRD4 antibody (A1337) at dilution of 1:100 (40x lens).