

# Phospho-Smad3-S423/S425 Rabbit pAb

Catalog No.: AP1263

## Basic Information

### Observed MW

52KDa

### Calculated MW

55kDa

### Category

Primary antibody

### Applications

WB

### Cross-Reactivity

Human, Mouse

## Background

The protein encoded by this gene belongs to the SMAD, a family of proteins similar to the gene products of the Drosophila gene 'mothers against decapentaplegic' (Mad) and the C. elegans gene Sma. SMAD proteins are signal transducers and transcriptional modulators that mediate multiple signaling pathways. This protein functions as a transcriptional modulator activated by transforming growth factor-beta and is thought to play a role in the regulation of carcinogenesis. [provided by RefSeq, Apr 2009]

## Recommended Dilutions

WB 1:500 - 1:2000

## Immunogen Information

### Gene ID

4088

### Swiss Prot

P84022

### Immunogen

A phospho synthetic peptide corresponding to residues surrounding S423/S425 of Human SMAD3.

### Synonyms

HSPC193;HsT17436;JV15-2;LDS1C;LDS3;MADH3;SMAD3

## Contact

 | [www.abclonal.com](http://www.abclonal.com)

## Product Information

### Source

Rabbit

### Isotype

IgG

### Purification

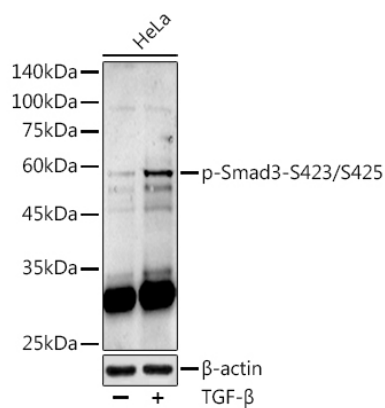
Affinity purification

### Storage

Store at -20°C. Avoid freeze / thaw cycles.

Buffer: PBS with 0.05% proclin300,50% glycerol,pH7.3.

## Validation Data



Western blot analysis of extracts of various cell lines, using (AP1263) at 1:1000 dilution. HeLa cells were treated by TGF-β (10 ng/ml) at 37°C for 30 minutes.

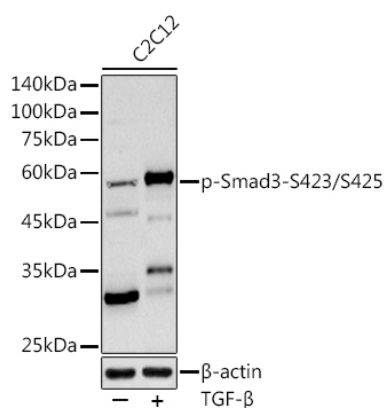
Secondary antibody: HRP Goat Anti-Rabbit IgG (H+L) (AS014) at 1:10000 dilution.

Lysates/proteins: 25ug per lane.

Blocking buffer: 3% nonfat dry milk in TBST.

Detection: ECL Basic Kit (RM00020).

Exposure time: 90s.



Western blot analysis of extracts of various cell lines, using (AP1263) at 1:1000 dilution. C2C12 cells were treated by TGF-β (10 ng/ml) at 37°C for 30 minutes.

Secondary antibody: HRP Goat Anti-Rabbit IgG (H+L) (AS014) at 1:10000 dilution.

Lysates/proteins: 25ug per lane.

Blocking buffer: 3% nonfat dry milk in TBST.

Detection: ECL Basic Kit (RM00020).

Exposure time: 180s.