

Phospho-NF2-S518 Rabbit pAb

Catalog No.: AP1225

Basic Information

Observed MW

70KDa

Calculated MW

19-30kDa/59-72kDa

Category

Primary antibody

Applications

WB

Cross-Reactivity

Human, Mouse, Rat

Background

This gene encodes a protein that is similar to some members of the ERM (ezrin, radixin, moesin) family of proteins that are thought to link cytoskeletal components with proteins in the cell membrane. This gene product has been shown to interact with cell-surface proteins, proteins involved in cytoskeletal dynamics and proteins involved in regulating ion transport. This gene is expressed at high levels during embryonic development; in adults, significant expression is found in Schwann cells, meningeal cells, lens and nerve. Mutations in this gene are associated with neurofibromatosis type II which is characterized by nervous system and skin tumors and ocular abnormalities. Two predominant isoforms and a number of minor isoforms are produced by alternatively spliced transcripts.

Recommended Dilutions

WB 1:500 - 1:2000

Immunogen Information

Gene ID

4771

Swiss Prot

P35240

Immunogen

A synthetic phosphorylated peptide around S518 of human NF2 (NP_000259.1).

Synonyms

NF2;ACN;BANF;SCH;merlin

Contact

 | www.abclonal.com

Product Information

Source

Rabbit

Isotype

IgG

Purification

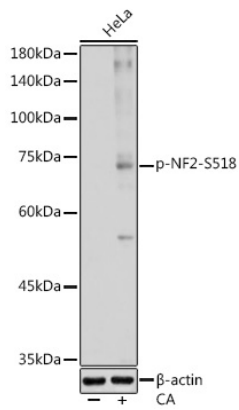
Affinity purification

Storage

Store at -20°C. Avoid freeze / thaw cycles.

Buffer: PBS with 0.01% thiomersal, 50% glycerol, pH7.3.

Validation Data



Western blot analysis of extracts of HeLa cells, using Phospho-NF2-S518 antibody (AP1225) at 1:1000 dilution. HeLa cells were treated by Calyculin A (100 nM) at 37°C for 30 minutes after serum-starvation overnight.

Secondary antibody: HRP Goat Anti-Rabbit IgG (H+L) (AS014) at 1:10000 dilution.

Lysates/proteins: 25ug per lane.

Blocking buffer: 3% nonfat dry milk in TBST.

Detection: ECL Basic Kit (RM00020).

Exposure time: 10s.