

EIF3L Rabbit pAb

Catalog No.: A9972

Basic Information

Observed MW

67kDa

Calculated MW

61kDa/66kDa

Category

Primary antibody

Applications

WB, IHC

Cross-Reactivity

Human, Mouse, Rat

Background

Component of the eukaryotic translation initiation factor 3 (eIF-3 complex, which is required for several steps in the initiation of protein synthesis. The eIF-3 complex associates with the 40S ribosome and facilitates the recruitment of eIF-1, eIF-1A, eIF-2:GTP:methionyl-tRNA_i and eIF-5 to form the 43S pre-initiation complex (43S PIC). The eIF-3 complex stimulates mRNA recruitment to the 43S PIC and scanning of the mRNA for AUG recognition. The eIF-3 complex is also required for disassembly and recycling of post-termination ribosomal complexes and subsequently prevents premature joining of the 40S and 60S ribosomal subunits prior to initiation. The eIF-3 complex specifically targets and initiates translation of a subset of mRNAs involved in cell proliferation, including cell cycling, differentiation and apoptosis, and uses different modes of RNA stem-loop binding to exert either translational activation or repression.

Recommended Dilutions

WB	1:1000 - 1:4000
IHC	1:50 - 1:200

Immunogen Information

Gene ID	Swiss Prot
51386	Q9Y262

Immunogen

Recombinant fusion protein containing a sequence corresponding to amino acids 1-230 of human EIF3L (NP_057175.1).

Synonyms

EIF3L; EIF3EIP; EIF3S11; EIF3S6IP; HSPC021; HSPC025; MSTP005

Contact

 | www.abclonal.com

Product Information

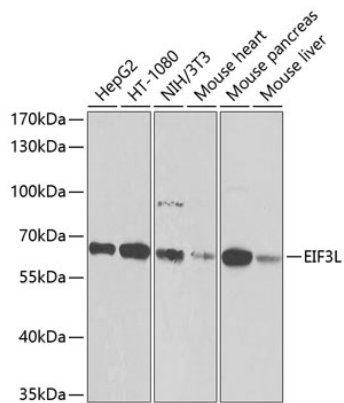
Source	Isotype	Purification
Rabbit	IgG	Affinity purification

Storage

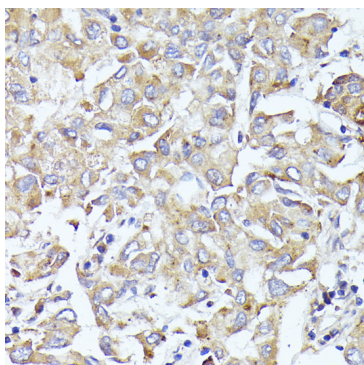
Store at -20°C. Avoid freeze / thaw cycles.

Buffer: PBS with 0.02% sodium azide, 50% glycerol, pH7.3.

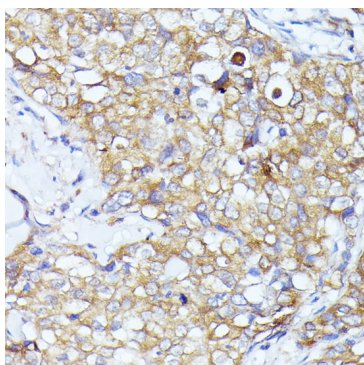
Validation Data



Western blot analysis of extracts of various cell lines, using EIF3L antibody (A9972) at 1:1000 dilution. Secondary antibody: HRP Goat Anti-Rabbit IgG (H+L) (AS014) at 1:10000 dilution. Lysates/proteins: 25ug per lane. Blocking buffer: 3% nonfat dry milk in TBST. Detection: ECL Basic Kit (RM00020). Exposure time: 5s.



Immunohistochemistry of paraffin-embedded human liver cancer using EIF3L antibody (A9972) at dilution of 1:100 (40x lens).



Immunohistochemistry of paraffin-embedded human mammary cancer using EIF3L antibody (A9972) at dilution of 1:100 (40x lens).