

Phospho-eIF4EBP1-T36 Rabbit pAb

Catalog No.: AP0344

Basic Information

Observed MW

20kDa

Calculated MW

12kDa

Category

Primary antibody

Applications

WB

Cross-Reactivity

Human, Mouse, Rat

Background

This gene encodes one member of a family of translation repressor proteins. The protein directly interacts with eukaryotic translation initiation factor 4E (eIF4E), which is a limiting component of the multisubunit complex that recruits 40S ribosomal subunits to the 5' end of mRNAs. Interaction of this protein with eIF4E inhibits complex assembly and represses translation. This protein is phosphorylated in response to various signals including UV irradiation and insulin signaling, resulting in its dissociation from eIF4E and activation of mRNA translation.

Recommended Dilutions

WB	1:500 - 1:2000
IHC	1:50 - 1:100

Immunogen Information

Gene ID	Swiss Prot
1978	Q13541

Immunogen

A synthetic phosphorylated peptide around T36 of human eIF4EBP1 (NP_004086.1).

Synonyms

4E-BP1;4EBP1;BP-1;PHAS-I;EIF4EBP1

Contact

 | www.abclonal.com

Product Information

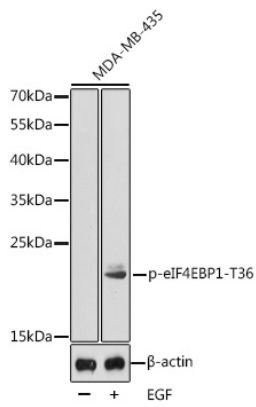
Source	Isotype	Purification
Rabbit	IgG	Affinity purification

Storage

Store at -20°C. Avoid freeze / thaw cycles.

Buffer: PBS with 0.01% thiomersal, 50% glycerol, pH7.3.

Validation Data



Western blot analysis of extracts from MDA-MB-435 cells, using Phospho-eIF4EBP1-T36 antibody (AP0344).

Secondary antibody: HRP Goat Anti-Rabbit IgG (H+L) (AS014) at 1:10000 dilution.

Lysates/proteins: 25ug per lane.

Blocking buffer: 3% BSA.