

# Phospho-NFKB1-S893 Rabbit pAb

Catalog No.: AP0415

## Basic Information

### Observed MW

### Calculated MW

85kDa/105kDa

### Category

Primary antibody

### Applications

IHC,IF/ICC

### Cross-Reactivity

Human

## Background

This gene encodes a 105 kD protein which can undergo cotranslational processing by the 26S proteasome to produce a 50 kD protein. The 105 kD protein is a Rel protein-specific transcription inhibitor and the 50 kD protein is a DNA binding subunit of the NF-kappa-B (NFKB) protein complex. NFKB is a transcription regulator that is activated by various intra- and extra-cellular stimuli such as cytokines, oxidant-free radicals, ultraviolet irradiation, and bacterial or viral products. Activated NFKB translocates into the nucleus and stimulates the expression of genes involved in a wide variety of biological functions. Inappropriate activation of NFKB has been associated with a number of inflammatory diseases while persistent inhibition of NFKB leads to inappropriate immune cell development or delayed cell growth. Alternative splicing results in multiple transcript variants encoding different isoforms, at least one of which is proteolytically processed.

## Recommended Dilutions

IHC	1:50 - 1:200
IF/ICC	1:100 - 1:200

## Immunogen Information

### Gene ID

4790

### Swiss Prot

P19838

### Immunogen

A phospho specific peptide corresponding to residues surrounding S893 of human NFKB1

### Synonyms

NFKB1;CVID12;EBP-1;KBF1;NF-kB1;NF-kappa-B;NF-kappaB;NFKB-p105;NFKB-p50;NFkappaB;p105;p50

## Contact



[www.abclonal.com](http://www.abclonal.com)

## Product Information

### Source

Rabbit

### Isotype

IgG

### Purification

Affinity purification

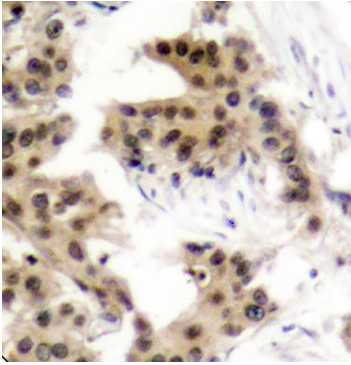
### Storage

Store at -20°C. Avoid freeze / thaw cycles.

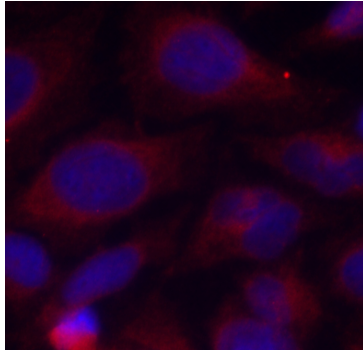
Buffer: PBS with 0.02% sodium azide,50% glycerol,pH7.3.

## Validation Data

---



Immunohistochemistry of paraffin-embedded human breast carcinoma using Phospho-NFKB1-S893 antibody (AP0415). Perform microwave antigen retrieval with 10 mM Tris/EDTA buffer pH 9.0 before commencing with IHC staining protocol.



Immunofluorescence analysis of methanol-fixed HeLa cells using Phospho-NFKB1-S893 antibody (AP0415).