

Phospho-EGFR-Y1197 Rabbit pAb

Catalog No.: AP0223

Basic Information

Observed MW

170kDa

Calculated MW

44kDa/69kDa/77kDa/134kDa

Category

Primary antibody

Applications

WB

Cross-Reactivity

Human

Background

The protein encoded by this gene is a transmembrane glycoprotein that is a member of the protein kinase superfamily. This protein is a receptor for members of the epidermal growth factor family. EGFR is a cell surface protein that binds to epidermal growth factor. Binding of the protein to a ligand induces receptor dimerization and tyrosine autophosphorylation and leads to cell proliferation. Mutations in this gene are associated with lung cancer.

Recommended Dilutions

WB 1:500 - 1:2000

Immunogen Information

Gene ID

1956

Swiss Prot

P00533

Immunogen

A phospho specific peptide corresponding to residues surrounding Y1197 of human EGFR

Synonyms

EGFR;ERBB;ERBB1;HER1;NISBD2;PIG61;mENA

Contact

 | www.abclonal.com

Product Information

Source

Rabbit

Isotype

IgG

Purification

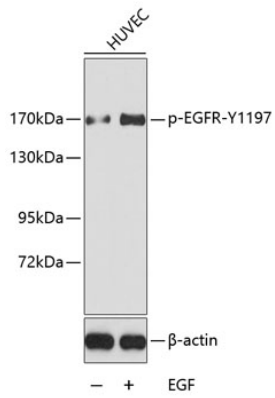
Affinity purification

Storage

Store at -20°C. Avoid freeze / thaw cycles.

Buffer: PBS with 0.02% sodium azide,50% glycerol,pH7.3.

Validation Data



Western blot analysis of extracts from HUVEC cells, using Phospho-EGFR-Y1197 antibody (AP0223).
Secondary antibody: HRP Goat Anti-Rabbit IgG (H+L) (AS014) at 1:10000 dilution.
Lysates/proteins: 25ug per lane.
Blocking buffer: 3% BSA.