

TOM70 Rabbit pAb

Catalog No.: A4349 **5 Publications**

Basic Information

Observed MW

75KDa

Calculated MW

67kDa

Category

Primary antibody

Applications

WB,IF/ICC

Cross-Reactivity

Human, Mouse, Rat

Background

This gene encodes an import receptor of the outer mitochondrial membrane that is part of the translocase of the outer membrane complex. This protein is involved in the import of mitochondrial precursor proteins.

Recommended Dilutions

WB	1:500 - 1:2000
IF/ICC	1:50 - 1:200

Immunogen Information

Gene ID	Swiss Prot
9868	O94826

Immunogen

Recombinant fusion protein containing a sequence corresponding to amino acids 245-608 of human TOM70 (NP_055635.3).

Synonyms

TOMM70;TOMM70A;Tom70;TOM70

Contact

 | www.abclonal.com

Product Information

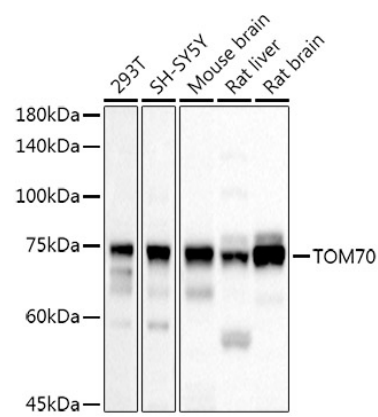
Source	Isotype	Purification
Rabbit	IgG	Affinity purification

Storage

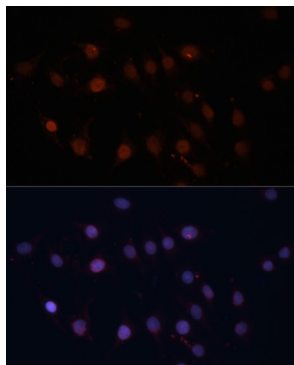
Store at -20°C. Avoid freeze / thaw cycles.

Buffer: PBS with 0.05% proclin300,50% glycerol,pH7.3.

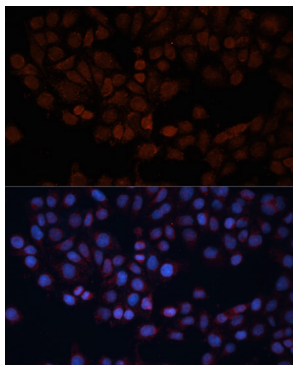
Validation Data



Western blot analysis of extracts of various cell lines, using TOM70 Rabbit pAb antibody (A4349) at 1:500 dilution.
Secondary antibody: HRP Goat Anti-Rabbit IgG (H+L) (A5014) at 1:10000 dilution.
Lysates/proteins: 25ug per lane.
Blocking buffer: 3% nonfat dry milk in TBST.
Detection: ECL Basic Kit (RM00020).
Exposure time: 10s.



Immunofluorescence analysis of C6 cells using TOM70 antibody (A4349) at dilution of 1:100. Blue: DAPI for nuclear staining.



Immunofluorescence analysis of HeLa cells using TOM70 antibody (A4349) at dilution of 1:100. Blue: DAPI for nuclear staining.