

DKK1 Rabbit pAb

Catalog No.: A2562 **1 Publications**

Basic Information

Observed MW

28-45kDa

Calculated MW

28kDa

Category

Primary antibody

Applications

WB

Cross-Reactivity

Human, Mouse, Rat

Background

This gene encodes a protein that is a member of the dickkopf family. It is a secreted protein with two cysteine rich regions and is involved in embryonic development through its inhibition of the WNT signaling pathway. Elevated levels of DKK1 in bone marrow plasma and peripheral blood is associated with the presence of osteolytic bone lesions in patients with multiple myeloma.

Recommended Dilutions

WB 1:500 - 1:1000

Immunogen Information

Gene ID

22943

Swiss Prot

O94907

Immunogen

Recombinant fusion protein containing a sequence corresponding to amino acids 32-266 of human DKK1 (NP_036374.1).

Synonyms

DKK1;DKK-1;SK

Contact

 | www.abclonal.com

Product Information

Source

Rabbit

Isotype

IgG

Purification

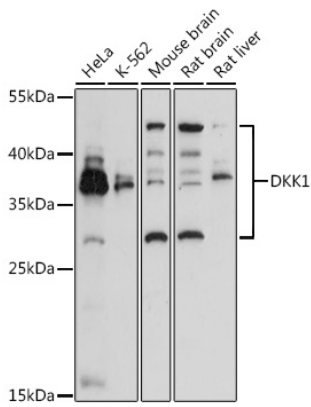
Affinity purification

Storage

Store at -20°C. Avoid freeze / thaw cycles.

Buffer: PBS with 0.05% proclin300,50% glycerol,pH7.3.

Validation Data



Western blot analysis of extracts of various cell lines, using DKK1 antibody (A2562) at 1:3000 dilution.
Secondary antibody: HRP Goat Anti-Rabbit IgG (H+L) (AS014) at 1:10000 dilution.
Lysates/proteins: 25ug per lane.
Blocking buffer: 3% nonfat dry milk in TBST.
Detection: ECL Basic Kit (RM00020).
Exposure time: 90s.