

# DiMethyl-Histone H4-K20 Rabbit pAb

Catalog No.: A2371 **1 Publications**

## Basic Information

### Observed MW

11kDa

### Calculated MW

11kDa

### Category

Primary antibody

### Applications

WB,IHC,IF/ICC,IP,ChIP,ChIP-seq

### Cross-Reactivity

Human, Mouse, Rat, Other (Wide Range)

## Recommended Dilutions

<b>WB</b>	1:500 - 1:2000
<b>IHC</b>	1:50 - 1:200
<b>IF/ICC</b>	1:50 - 1:200
<b>IP</b>	1:50 - 1:200
<b>ChIP</b>	1:20 - 1:100
<b>ChIP-seq</b>	1:20 - 1:100

## Contact

 | [www.abclonal.com](http://www.abclonal.com)

## Background

Histones are basic nuclear proteins that are responsible for the nucleosome structure of the chromosomal fiber in eukaryotes. This structure consists of approximately 146 bp of DNA wrapped around a nucleosome, an octamer composed of pairs of each of the four core histones (H2A, H2B, H3, and H4). The chromatin fiber is further compacted through the interaction of a linker histone, H1, with the DNA between the nucleosomes to form higher order chromatin structures. This gene is intronless and encodes a replication-dependent histone that is a member of the histone H4 family. Transcripts from this gene lack polyA tails; instead, they contain a palindromic termination element. This gene is found in a histone cluster on chromosome 1. This gene is one of four histone genes in the cluster that are duplicated; this record represents the centromeric copy.

## Immunogen Information

<b>Gene ID</b>	<b>Swiss Prot</b>
8370	P62805

### Immunogen

A synthetic dimethylated peptide around K20 of human histone H4 (NP\_003529.1).

### Synonyms

FO108;H4;H4/n;H4F2;H4FN;HIST2H4;Histone H4;HIST1H4A;HIST2H4A

## Product Information

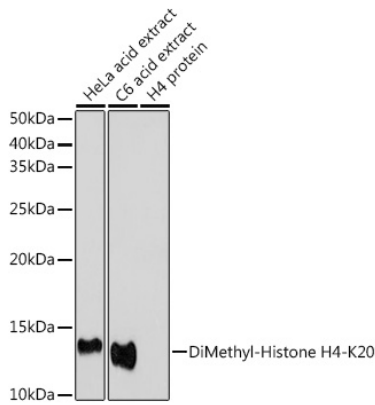
<b>Source</b>	<b>Isotype</b>	<b>Purification</b>
Rabbit	IgG	Affinity purification

### Storage

Store at -20°C. Avoid freeze / thaw cycles.

Buffer: PBS with 0.02% sodium azide,50% glycerol,pH7.3.

## Validation Data



Western blot analysis of extracts of various cell lines, using DiMethyl-Histone H4-K20 antibody (A2371) at 1:1000 dilution.

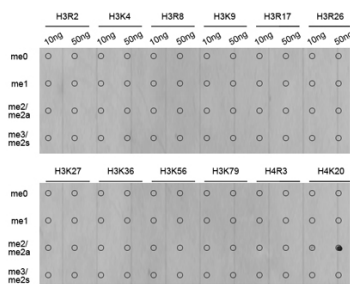
Secondary antibody: HRP Goat Anti-Rabbit IgG (H+L) (AS014) at 1:10000 dilution.

Lysates/proteins: 25ug per lane.

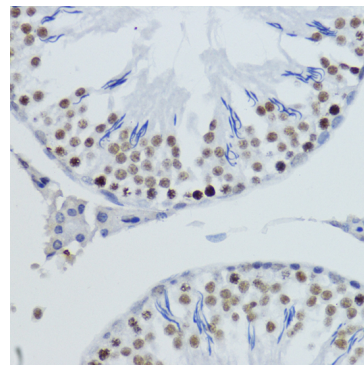
Blocking buffer: 3% nonfat dry milk in TBST.

Detection: ECL Basic Kit (RM00020).

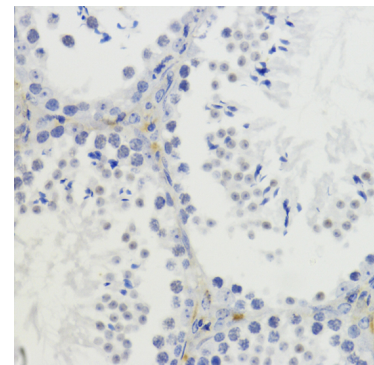
Exposure time: 30s.



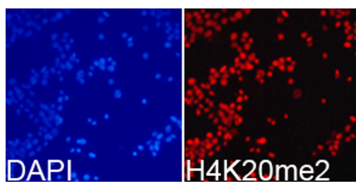
Dot-blot analysis of all sorts of methylation peptides using DiMethyl-Histone H4-K20 antibody (A2371).



Immunohistochemistry of paraffin-embedded rat testis using DiMethyl-Histone H4-K20 antibody (A2371) at dilution of 1:200 (40x lens). Perform microwave antigen retrieval with 10 mM PBS buffer pH 7.2 before commencing with IHC staining protocol.



Immunohistochemistry of paraffin-embedded mouse testis using DiMethyl-Histone H4-K20 antibody (A2371) at dilution of 1:200 (40x lens). Perform microwave antigen retrieval with 10 mM PBS buffer pH 7.2 before commencing with IHC staining protocol.



Immunofluorescence analysis of 293T cells using DiMethyl-Histone H4-K20 antibody (A2371). Blue: DAPI for nuclear staining.