

# K6-linkage Specific Polyubiquitin Rabbit pAb

Catalog No.: A18106

## Basic Information

---

**Observed MW**

**Calculated MW**

**Category**

Primary antibody

**Applications**

WB,DB

**Cross-Reactivity**

Mouse, Rat

## Background

---

## Recommended Dilutions

---

**WB** 1:500 - 1:2000

**DB** 1:500 - 1:2000

## Immunogen Information

---

**Gene ID**

**Swiss Prot**

**Immunogen**

A synthetic peptide corresponding to a sequence containing polyubiquitinated protein (K6 linkage).

**Synonyms**

## Contact

---

 | [www.abclonal.com](http://www.abclonal.com)

## Product Information

---

**Source**

Rabbit

**Isotype**

IgG

**Purification**

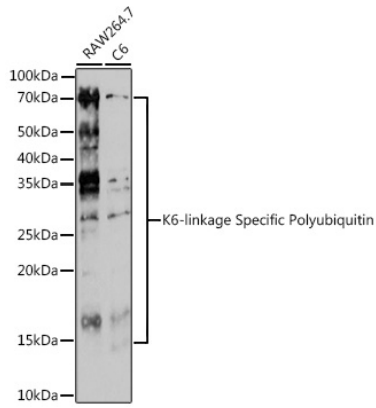
Affinity purification

**Storage**

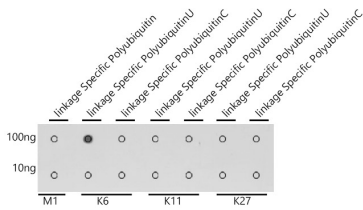
Store at -20°C. Avoid freeze / thaw cycles.

Buffer: PBS with 0.01% thiomersal, 50% glycerol, pH7.3.

## Validation Data



Western blot analysis of extracts of various cell lines, using K6-linkage Specific Polyubiquitin Rabbit pAb (A18106) at 1:500 dilution.  
 Secondary antibody: HRP Goat Anti-Rabbit IgG (H+L) (AS014) at 1:10000 dilution.  
 Lysates/proteins: 25ug per lane.  
 Blocking buffer: 3% nonfat dry milk in TBST.  
 Detection: ECL Enhanced Kit (RM00021).  
 Exposure time: 180s.



Dot-blot analysis of all sorts of peptides using K6-linkage Specific Polyubiquitin antibody (A18106) at 1:1000 dilution.