

RCCD1 Rabbit pAb

Catalog No.: A17804

Basic Information

Observed MW

45kDa

Calculated MW

Category

Primary antibody

Applications

WB

Cross-Reactivity

Human, Rat

Background

Plays a role in transcriptional repression of satellite repeats, possibly by regulating H3K36 methylation levels in centromeric regions together with KDM8. Possibly together with KDM8, is involved in proper mitotic spindle organization and chromosome segregation. Plays a role in regulating alpha-tubulin deacetylation and cytoskeletal microtubule stability, thereby promoting cell migration and TGF-beta-induced epithelial to mesenchymal transition (EMT, potentially through the inhibition of KDM8).

Recommended Dilutions

WB 1:500 - 1:2000

Immunogen Information

Gene ID

91433

Swiss Prot

A6NED2

Immunogen

Recombinant fusion protein containing a sequence corresponding to amino acids 230-360 of human RCCD1 (NP_001017919.1).

Synonyms

RCCD1

Contact

 | www.abclonal.com

Product Information

Source

Rabbit

Isotype

IgG

Purification

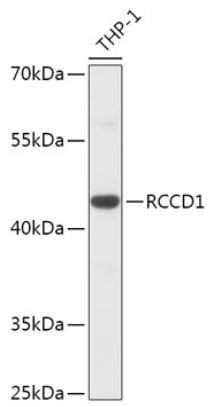
Affinity purification

Storage

Store at -20°C. Avoid freeze / thaw cycles.

Buffer: PBS with 0.01% thiomersal, 50% glycerol, pH7.3.

Validation Data



Western blot analysis of extracts of THP-1 cells, using RCCD1 antibody (A17804) at 1:1000 dilution.
Secondary antibody: HRP Goat Anti-Rabbit IgG (H+L) (AS014) at 1:10000 dilution.
Lysates/proteins: 25ug per lane.
Blocking buffer: 3% nonfat dry milk in TBST.
Detection: ECL Basic Kit (RM00020).
Exposure time: 90s.