

YIPF7 Rabbit pAb

Catalog No.: A16180

Basic Information

Observed MW

31kDa

Calculated MW

7kDa/14kDa/23kDa/30kDa

Category

Primary antibody

Applications

WB

Cross-Reactivity

Rat

Background

Recommended Dilutions

WB 1:500 - 1:2000

Immunogen Information

Gene ID

285525

Swiss Prot

Q8N8F6

Immunogen

Recombinant fusion protein containing a sequence corresponding to amino acids 1-80 of human YIPF7 (NP_872398.2).

Synonyms

YIPF7;FinGER9

Contact

 | www.abclonal.com

Product Information

Source

Rabbit

Isotype

IgG

Purification

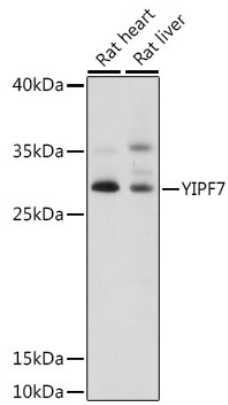
Affinity purification

Storage

Store at -20°C. Avoid freeze / thaw cycles.

Buffer: PBS with 0.01% thiomersal, 50% glycerol, pH7.3.

Validation Data



Western blot analysis of extracts of various cell lines, using YIPF7 antibody (A16180) at 1:1000 dilution.

Secondary antibody: HRP Goat Anti-Rabbit IgG (H+L) (AS014) at 1:10000 dilution.

Lysates/proteins: 25ug per lane.

Blocking buffer: 3% nonfat dry milk in TBST.

Detection: ECL Basic Kit (RM00020).

Exposure time: 15s.