

E2F1 Rabbit pAb

Catalog No.: A16720

Basic Information

Observed MW

70kDa

Calculated MW

46kDa

Category

Primary antibody

Applications

WB, IF/ICC

Cross-Reactivity

Human, Mouse, Rat

Background

The protein encoded by this gene is a member of the E2F family of transcription factors. The E2F family plays a crucial role in the control of cell cycle and action of tumor suppressor proteins and is also a target of the transforming proteins of small DNA tumor viruses. The E2F proteins contain several evolutionally conserved domains found in most members of the family. These domains include a DNA binding domain, a dimerization domain which determines interaction with the differentiation regulated transcription factor proteins (DP), a transactivation domain enriched in acidic amino acids, and a tumor suppressor protein association domain which is embedded within the transactivation domain. This protein and another 2 members, E2F2 and E2F3, have an additional cyclin binding domain. This protein binds preferentially to retinoblastoma protein pRB in a cell-cycle dependent manner. It can mediate both cell proliferation and p53-dependent/independent apoptosis.

Recommended Dilutions

| | |
|---------------|----------------|
| WB | 1:500 - 1:1000 |
| IF/ICC | 1:20 - 1:100 |

Immunogen Information

| | |
|----------------|-------------------|
| Gene ID | Swiss Prot |
| 1869 | Q01094 |

Immunogen

Recombinant fusion protein containing a sequence corresponding to amino acids 301-437 of human E2F1 (Q01094).

Synonyms

E2F-1;RBAP1;RBBP3;RBP3;E2F1

Contact

 | www.abclonal.com

Product Information

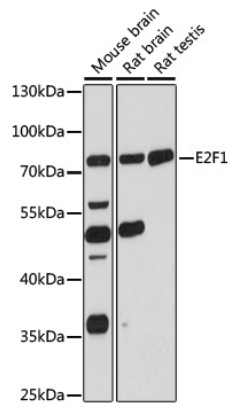
| | | |
|---------------|----------------|-----------------------|
| Source | Isotype | Purification |
| Rabbit | IgG | Affinity purification |

Storage

Store at -20°C. Avoid freeze / thaw cycles.

Buffer: PBS with 0.01% thiomersal, 50% glycerol, pH7.3.

Validation Data



Western blot analysis of extracts of various cell lines, using E2F1 antibody (A16720) at 1:1000 dilution.

Secondary antibody: HRP Goat Anti-Rabbit IgG (H+L) (AS014) at 1:10000 dilution.

Lysates/proteins: 25ug per lane.

Blocking buffer: 3% nonfat dry milk in TBST.

Detection: ECL Basic Kit (RM00020).

Exposure time: 90s.