

# ZDHHC18 Rabbit pAb

Catalog No.: A15199

## Basic Information

### Observed MW

42kDa

### Calculated MW

27kDa/42kDa

### Category

Primary antibody

### Applications

WB, IHC

### Cross-Reactivity

Human, Mouse, Rat

## Background

Palmitoyltransferase that could catalyze the addition of palmitate onto various protein substrates. Palmitoylates HRAS and LCK (By similarity. May also have a palmitoyltransferase activity toward the beta-2 adrenergic receptor/ADRB2 and therefore regulate G protein-coupled receptor signaling.

## Recommended Dilutions

<b>WB</b>	1:500 - 1:2000
<b>IHC</b>	1:50 - 1:200

## Immunogen Information

<b>Gene ID</b>	<b>Swiss Prot</b>
84243	Q9NUE0

### Immunogen

Recombinant fusion protein containing a sequence corresponding to amino acids 301-388 of human ZDHHC18 (NP\_115659.1).

### Synonyms

ZDHHC18;DHHC-18;DHHC18

## Contact

 | [www.abclonal.com](http://www.abclonal.com)

## Product Information

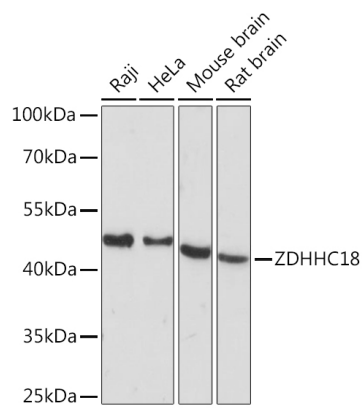
<b>Source</b>	<b>Isotype</b>	<b>Purification</b>
Rabbit	IgG	Affinity purification

### Storage

Store at -20°C. Avoid freeze / thaw cycles.

Buffer: PBS with 0.01% thiomersal, 50% glycerol, pH7.3.

## Validation Data



Western blot analysis of extracts of various cell lines, using ZDHHC18 Rabbit pAb (A15199) at 1:1000 dilution.

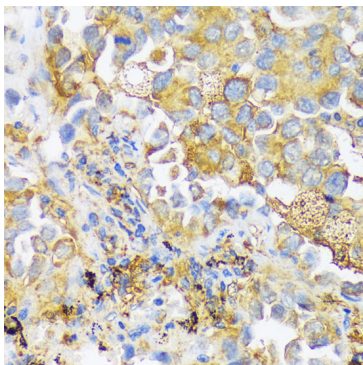
Secondary antibody: HRP Goat Anti-Rabbit IgG (H+L) (AS014) at 1:10000 dilution.

Lysates/proteins: 25ug per lane.

Blocking buffer: 3% nonfat dry milk in TBST.

Detection: ECL Basic Kit (RM00020).

Exposure time: 60s.



Immunohistochemistry of paraffin-embedded human lung cancer using ZDHHC18 antibody (A15199) at dilution of 1:100 (40x lens).