

PTP4A2 Rabbit pAb

Catalog No.: A15335

Basic Information

Observed MW

19kDa

Calculated MW

9kDa/15kDa/16kDa/19kDa

Category

Primary antibody

Applications

WB, IHC, IF/ICC

Cross-Reactivity

Human, Mouse, Rat

Background

The protein encoded by this gene belongs to a small class of the protein tyrosine phosphatase (PTP) family. PTPs are cell signaling molecules that play regulatory roles in a variety of cellular processes. PTPs in this class contain a protein tyrosine phosphatase catalytic domain and a characteristic C-terminal prenylation motif. This PTP has been shown to primarily associate with plasmic and endosomal membrane through its C-terminal prenylation. This PTP was found to interact with the beta-subunit of Rab geranylgeranyltransferase II (beta GGT II), and thus may function as a regulator of GGT II activity. Overexpression of this gene in mammalian cells conferred a transformed phenotype, which suggested its role in tumorigenesis. Alternatively spliced transcript variants have been described. Related pseudogenes exist on chromosomes 11, 12 and 17.

Recommended Dilutions

WB	1:200 - 1:2000
IHC	1:50 - 1:200
IF/ICC	1:50 - 1:200

Immunogen Information

Gene ID	Swiss Prot
8073	Q12974

Immunogen

Recombinant fusion protein containing a sequence corresponding to amino acids 30-100 of human PTP4A2 (NP_536316.1).

Synonyms

PTP4A2;HH13;HH7-2;HU-PP-1;OV-1;PRL-2;PRL2;PTP4A;PTPCAAX2;ptp-IV1a;ptp-IV1b

Contact

 | www.abclonal.com

Product Information

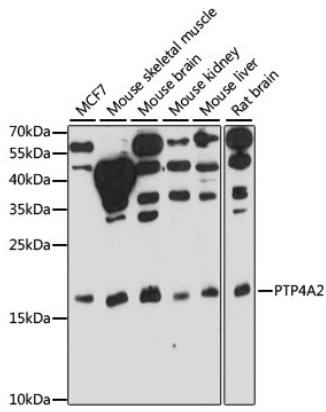
Source	Isotype	Purification
Rabbit	IgG	Affinity purification

Storage

Store at -20°C. Avoid freeze / thaw cycles.

Buffer: PBS with 0.01% thiomersal, 50% glycerol, pH7.3.

Validation Data



Western blot analysis of extracts of various cell lines, using PTP4A2 antibody (A15335) at 1:1000 dilution.

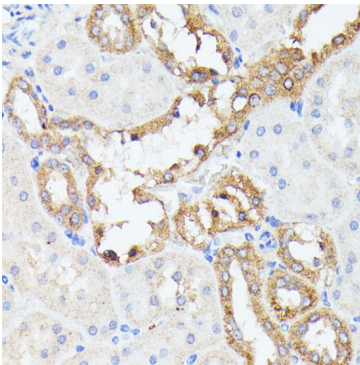
Secondary antibody: HRP Goat Anti-Rabbit IgG (H+L) (AS014) at 1:10000 dilution.

Lysates/proteins: 25ug per lane.

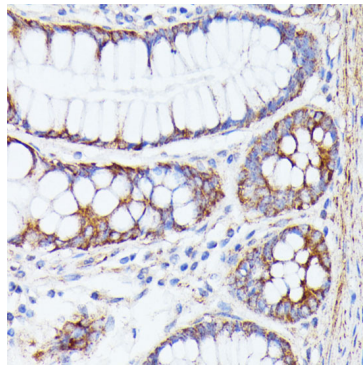
Blocking buffer: 3% nonfat dry milk in TBST.

Detection: ECL Basic Kit (RM00020).

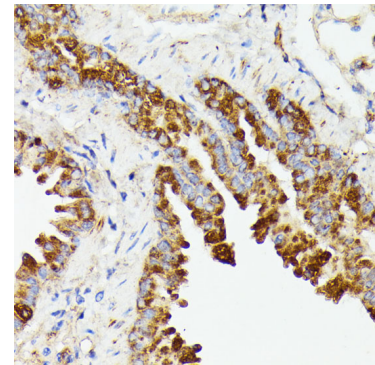
Exposure time: 30s.



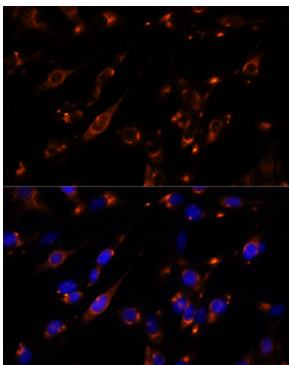
Immunohistochemistry of paraffin-embedded rat kidney using PTP4A2 antibody (A15335) at dilution of 1:100 (40x lens).



Immunohistochemistry of paraffin-embedded human colon using PTP4A2 antibody (A15335) at dilution of 1:100 (40x lens).



Immunohistochemistry of paraffin-embedded mouse lung using PTP4A2 antibody (A15335) at dilution of 1:100 (40x lens).



Immunofluorescence analysis of C6 cells using PTP4A2 antibody (A15335) at dilution of 1:100. Blue: DAPI for nuclear staining.