

# Somatostatin Receptor 2 (SSTR2) Rabbit pAb

Catalog No.: A15101

## Basic Information

### Observed MW

56kDa

### Calculated MW

40kDa/41kDa

### Category

Primary antibody

### Applications

WB,IF/ICC

### Cross-Reactivity

Human, Mouse, Rat

## Background

Somatostatin acts at many sites to inhibit the release of many hormones and other secretory proteins. The biologic effects of somatostatin are probably mediated by a family of G protein-coupled receptors that are expressed in a tissue-specific manner. SSTR2 is a member of the superfamily of receptors having seven transmembrane segments and is expressed in highest levels in cerebrum and kidney.

## Recommended Dilutions

<b>WB</b>	1:500 - 1:2000
<b>IF/ICC</b>	1:50 - 1:100

## Immunogen Information

<b>Gene ID</b>	<b>Swiss Prot</b>
6752	P30874

### Immunogen

A synthetic peptide corresponding to a sequence within amino acids 300 to the C-terminus of human Somatostatin Receptor 2 (SSTR2) (NP\_001041.1).

### Synonyms

SSTR2; somatostatin receptor 2; SS 2 R; SS2R; SRIF 1; SS2 R; SRIF-1

## Contact

 | [www.abclonal.com](http://www.abclonal.com)

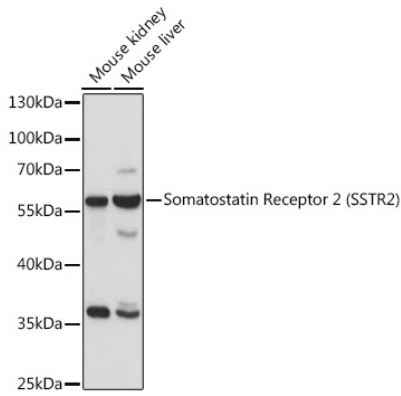
## Product Information

<b>Source</b>	<b>Isotype</b>	<b>Purification</b>
Rabbit	IgG	Affinity purification

### Storage

Store at -20°C. Avoid freeze / thaw cycles.  
Buffer: PBS with 0.01% thiomersal, 50% glycerol, pH7.3.

## Validation Data



Western blot analysis of extracts of various cell lines, using Somatostatin Receptor 2 (SSTR2) antibody (A15101) at 1:1000 dilution.

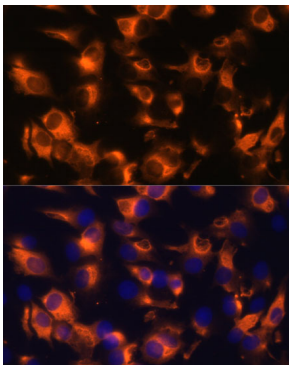
Secondary antibody: HRP Goat Anti-Rabbit IgG (H+L) (AS014) at 1:10000 dilution.

Lysates/proteins: 25ug per lane.

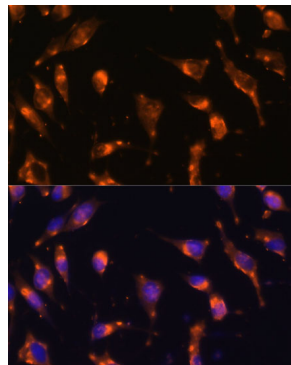
Blocking buffer: 3% nonfat dry milk in TBST.

Detection: ECL Enhanced Kit (RM00021).

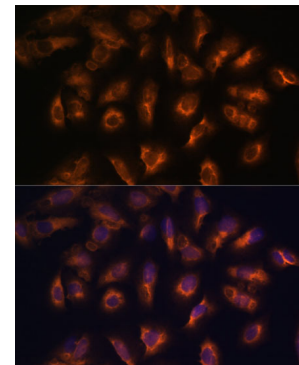
Exposure time: 30s.



Immunofluorescence analysis of C6 cells using Somatostatin Receptor 2 (SSTR2) Polyclonal Antibody (A15101) at dilution of 1:100 (40x lens). Blue: DAPI for nuclear staining.



Immunofluorescence analysis of L929 cells using Somatostatin Receptor 2 (SSTR2) Polyclonal Antibody (A15101) at dilution of 1:100 (40x lens). Blue: DAPI for nuclear staining.



Immunofluorescence analysis of U-2 OS cells using Somatostatin Receptor 2 (SSTR2) Polyclonal Antibody (A15101) at dilution of 1:100 (40x lens). Blue: DAPI for nuclear staining.