

MIS12 Rabbit pAb

Catalog No.: A15508

Basic Information

Observed MW

24kDa

Calculated MW

24kDa

Category

Primary antibody

Applications

WB

Cross-Reactivity

Human

Background

Part of the MIS12 complex which is required for normal chromosome alignment and segregation and for kinetochore formation during mitosis. Essential for proper kinetochore microtubule attachments.

Recommended Dilutions

WB 1:200 - 1:2000

Immunogen Information

Gene ID

79003

Swiss Prot

Q9H081

Immunogen

Recombinant fusion protein containing a sequence corresponding to amino acids 1-205 of human MIS12 (NP_076944.1).

Synonyms

MIS12;2510025F08Rik;KNTC2AP;MTW1;hMis12

Contact

 | www.abclonal.com

Product Information

Source

Rabbit

Isotype

IgG

Purification

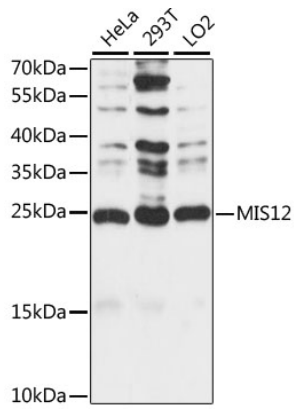
Affinity purification

Storage

Store at -20°C. Avoid freeze / thaw cycles.

Buffer: PBS with 0.01% thiomersal, 50% glycerol, pH7.3.

Validation Data



Western blot analysis of extracts of various cell lines, using MIS12 antibody (A15508) at 1:1000 dilution.

Secondary antibody: HRP Goat Anti-Rabbit IgG (H+L) (AS014) at 1:10000 dilution.

Lysates/proteins: 25ug per lane.

Blocking buffer: 3% nonfat dry milk in TBST.

Detection: ECL Basic Kit (RM00020).

Exposure time: 30s.