

Vinculin Rabbit pAb

Catalog No.: A14193 **2 Publications**

Basic Information

Observed MW

124kDa

Calculated MW

24kDa/116kDa/123kDa

Category

Primary antibody

Applications

WB,IF/ICC

Cross-Reactivity

Human, Mouse, Rat

Background

Vinculin is a cytoskeletal protein associated with cell-cell and cell-matrix junctions, where it is thought to function as one of several interacting proteins involved in anchoring F-actin to the membrane. Defects in VCL are the cause of cardiomyopathy dilated type 1W. Dilated cardiomyopathy is a disorder characterized by ventricular dilation and impaired systolic function, resulting in congestive heart failure and arrhythmia. Multiple alternatively spliced transcript variants have been found for this gene, but the biological validity of some variants has not been determined.

Recommended Dilutions

WB	1:500 - 1:2000
IF/ICC	1:50 - 1:200

Immunogen Information

Gene ID	Swiss Prot
7414	P18206

Immunogen

Recombinant fusion protein containing a sequence corresponding to amino acids 767-1066 of human Vinculin (NP_003364.1).

Synonyms

VCL;CMD1W;CMH15;HEL114;MV;MVCL;vinculin

Contact

 | www.abclonal.com

Product Information

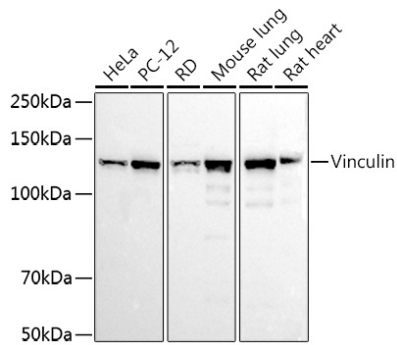
Source	Isotype	Purification
Rabbit	IgG	Affinity purification

Storage

Store at -20°C. Avoid freeze / thaw cycles.

Buffer: PBS with 0.05% proclin300,50% glycerol,pH7.3.

Validation Data



Western blot analysis of extracts of various cell lines, using Vinculin antibody (A14193) at 1:1000 dilution.

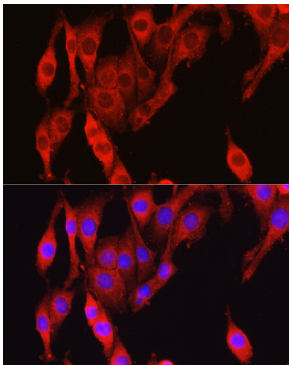
Secondary antibody: HRP Goat Anti-Rabbit IgG (H+L) (AS014) at 1:10000 dilution.

Lysates/proteins: 25ug per lane.

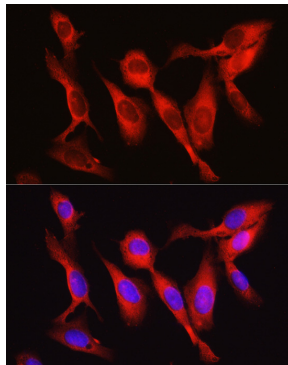
Blocking buffer: 3% nonfat dry milk in TBST.

Detection: ECL Basic Kit (RM00020).

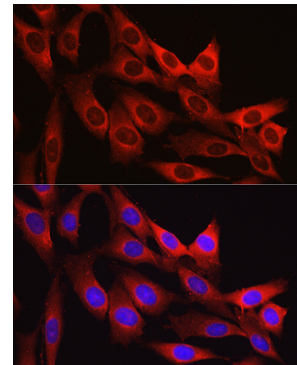
Exposure time: 10s.



Immunofluorescence analysis of PC-12 cells using Vinculin antibody (A14193) at dilution of 1:150. Blue: DAPI for nuclear staining.



Immunofluorescence analysis of U2OS cells using Vinculin antibody (A14193) at dilution of 1:150. Blue: DAPI for nuclear staining.



Immunofluorescence analysis of NIH/3T3 cells using Vinculin antibody (A14193) at dilution of 1:150. Blue: DAPI for nuclear staining.