

Ferritin Heavy Chain Rabbit pAb

Catalog No.: A1144 **8 Publications**

Basic Information

Observed MW

21kDa

Calculated MW

21kDa

Category

Primary antibody

Applications

IHC,IF/ICC

Cross-Reactivity

Human, Mouse, Rat

Background

This gene encodes the heavy subunit of ferritin, the major intracellular iron storage protein in prokaryotes and eukaryotes. It is composed of 24 subunits of the heavy and light ferritin chains. Variation in ferritin subunit composition may affect the rates of iron uptake and release in different tissues. A major function of ferritin is the storage of iron in a soluble and nontoxic state. Defects in ferritin proteins are associated with several neurodegenerative diseases. This gene has multiple pseudogenes. Several alternatively spliced transcript variants have been observed, but their biological validity has not been determined.

Recommended Dilutions

IHC	1:50 - 1:200
IF/ICC	1:50 - 1:200

Immunogen Information

Gene ID	Swiss Prot
2495	P02794

Immunogen

Recombinant fusion protein containing a sequence corresponding to amino acids 1-183 of human Ferritin Heavy Chain (NP_002023.2).

Synonyms

FHC;FTH;FTHL6;HFE5;PIG15;PLIF;Ferritin;FTH1

Contact

 | www.abclonal.com

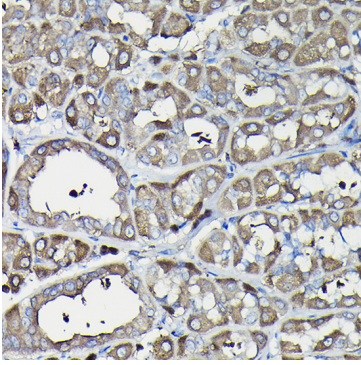
Product Information

Source	Isotype	Purification
Rabbit	IgG	Affinity purification

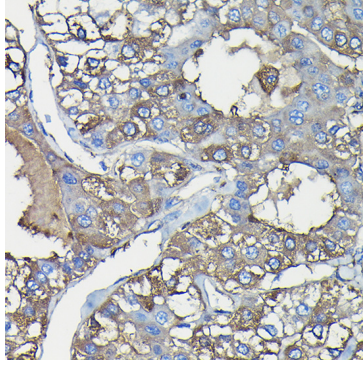
Storage

Store at -20°C. Avoid freeze / thaw cycles.
Buffer: PBS with 0.05% proclin300,50% glycerol,pH7.3.

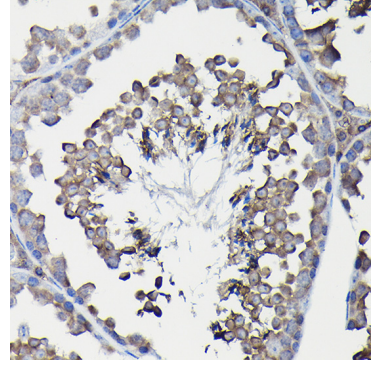
Validation Data



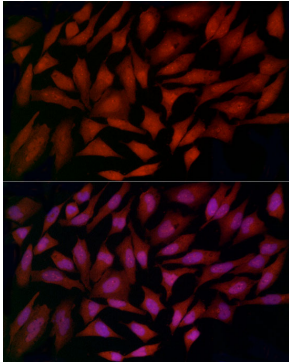
Immunohistochemistry of paraffin-embedded rat stomach using Ferritin Heavy Chain Rabbit pAb (A1144) at dilution of 1:100 (40x lens). Perform high pressure antigen retrieval with 10 mM citrate buffer pH 6.0 before commencing with IHC staining protocol.



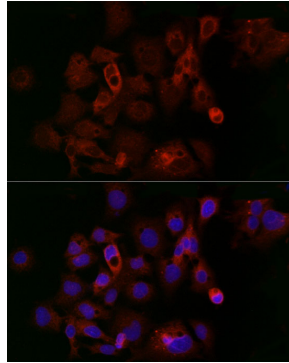
Immunohistochemistry of paraffin-embedded human liver cancer using Ferritin Heavy Chain Rabbit pAb (A1144) at dilution of 1:100 (40x lens). Perform high pressure antigen retrieval with 10 mM citrate buffer pH 6.0 before commencing with IHC staining protocol.



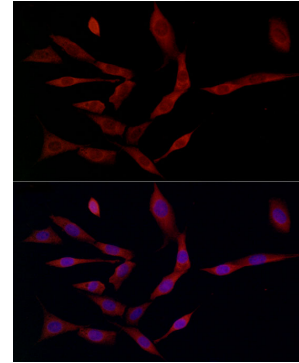
Immunohistochemistry of paraffin-embedded mouse testis using Ferritin Heavy Chain Rabbit pAb (A1144) at dilution of 1:100 (40x lens). Perform high pressure antigen retrieval with 10 mM citrate buffer pH 6.0 before commencing with IHC staining protocol.



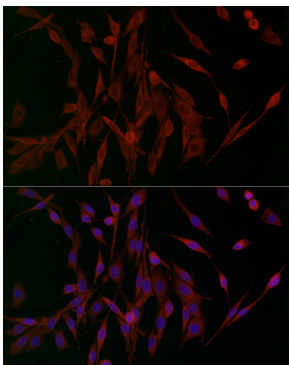
Immunofluorescence analysis of HeLa cells using Ferritin Heavy Chain Rabbit pAb (A1144) at dilution of 1:200 (40x lens). Blue: DAPI for nuclear staining.



Immunofluorescence analysis of HepG2 cells using Ferritin Heavy Chain Rabbit pAb (A1144) at dilution of 1:200 (40x lens). Blue: DAPI for nuclear staining.



Immunofluorescence analysis of NIH/3T3 cells using Ferritin Heavy Chain Rabbit pAb (A1144) at dilution of 1:200 (40x lens). Blue: DAPI for nuclear staining.



Immunofluorescence analysis of PC-12 cells using Ferritin Heavy Chain Rabbit pAb (A1144) at dilution of 1:200 (40x lens). Blue: DAPI for nuclear staining.