

PIBF1 Rabbit pAb

Catalog No.: A12033

Basic Information

Observed MW

110kDa

Calculated MW

12kDa/25kDa/35kDa/89kDa

Category

Primary antibody

Applications

WB

Cross-Reactivity

Human

Background

Recommended Dilutions

WB 1:500 - 1:2000

Immunogen Information

Gene ID

10464

Swiss Prot

Q8WXW3

Immunogen

Recombinant fusion protein containing a sequence corresponding to amino acids 598-757 of human PIBF1 (NP_006337.2).

Synonyms

PIBF1;C13orf24;CEP90;PIBF

Contact

 | www.abclonal.com

Product Information

Source

Rabbit

Isotype

IgG

Purification

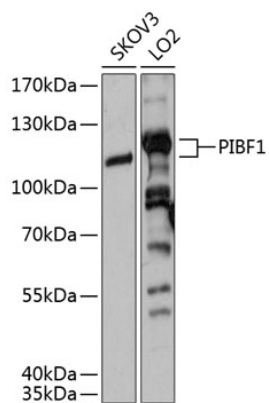
Affinity purification

Storage

Store at -20°C. Avoid freeze / thaw cycles.

Buffer: PBS with 0.01% thiomersal, 50% glycerol, pH7.3.

Validation Data



Western blot analysis of extracts of various cell lines, using PIBF1 antibody (A12033) at 1:3000 dilution.

Secondary antibody: HRP Goat Anti-Rabbit IgG (H+L) (A5014) at 1:10000 dilution.

Lysates/proteins: 25ug per lane.

Blocking buffer: 3% nonfat dry milk in TBST.

Detection: ECL Basic Kit (RM00020).

Exposure time: 3s.