

# Interferon alpha 1 (IFN- $\alpha$ 1) Rabbit pAb

Catalog No.: A0285 **1 Publications**

## Basic Information

### Observed MW

18KDa/22KDa

### Calculated MW

21kDa

### Category

Primary antibody

### Applications

WB

### Cross-Reactivity

Human, Mouse, Rat

## Background

The protein encoded by this gene is produced by macrophages and has antiviral activity. This gene is intronless and the encoded protein is secreted.

## Recommended Dilutions

**WB** 1:500 - 1:2000

## Immunogen Information

### Gene ID

3439

### Swiss Prot

P01562

### Immunogen

Recombinant fusion protein containing a sequence corresponding to amino acids 24-189 of human Interferon alpha 1 (IFN- $\alpha$ 1) (NP\_076918.1).

### Synonyms

IFNA1;IFL;IFN;IFN-ALPHA;IFN-alphaD;IFNA13;IFNA

## Contact

 | [www.abclonal.com](http://www.abclonal.com)

## Product Information

### Source

Rabbit

### Isotype

IgG

### Purification

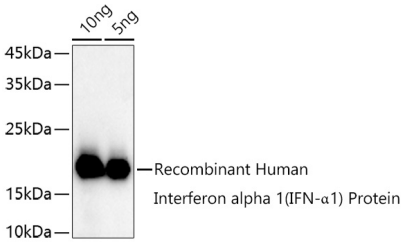
Affinity purification

### Storage

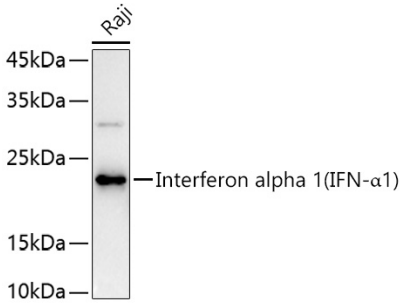
Store at -20°C. Avoid freeze / thaw cycles.

Buffer: PBS with 0.02% sodium azide, 50% glycerol, pH7.3.

# Validation Data



Western blot analysis of extracts of Recombinant Human Interferon alpha 1 (IFN-α1) Protein, using Interferon alpha 1 (IFN-α1) antibody (A0285) at 1:1000 dilution.  
Secondary antibody: HRP Goat Anti-Rabbit IgG (H+L) (AS014) at 1:10000 dilution.  
Lysates/proteins: 25ug per lane.  
Blocking buffer: 3% nonfat dry milk in TBST.  
Detection: ECL Basic Kit (RM00020).  
Exposure time: 30s.



Western blot analysis of extracts of Raji cells, using Interferon alpha 1 (IFN-α1) antibody (A0285) at 1:1000 dilution.  
Secondary antibody: HRP Goat Anti-Rabbit IgG (H+L) (AS014) at 1:10000 dilution.  
Lysates/proteins: 25ug per lane.  
Blocking buffer: 3% nonfat dry milk in TBST.  
Detection: ECL Basic Kit (RM00020).  
Exposure time: 180s.