

NF- κ B p65/RelA Rabbit pAb

Catalog No.: A11202 **4 Publications**

Basic Information

Observed MW

65kDa

Calculated MW

58kDa/59kDa/60kDa

Category

Primary antibody

Applications

WB,IHC,IF/ICC

Cross-Reactivity

Human, Mouse, Rat

Background

NF- κ B is a ubiquitous transcription factor involved in several biological processes. It is held in the cytoplasm in an inactive state by specific inhibitors. Upon degradation of the inhibitor, NF- κ B moves to the nucleus and activates transcription of specific genes. NF- κ B is composed of NFKB1 or NFKB2 bound to either REL, RELA, or RELB. The most abundant form of NF- κ B is NFKB1 complexed with the product of this gene, RELA. Four transcript variants encoding different isoforms have been found for this gene.

Recommended Dilutions

WB	1:500 - 1:2000
IHC	1:50 - 1:100
IF/ICC	1:50 - 1:200

Immunogen Information

Gene ID	Swiss Prot
5970	Q04206

Immunogen

A synthetic peptide corresponding to a sequence within amino acids 450-551 of human NF- κ B p65/RelA (NP_068810.3).

Synonyms

NFKB3;p65;NF- κ B p65;RELA;CMCU

Contact

 | www.abclonal.com

Product Information

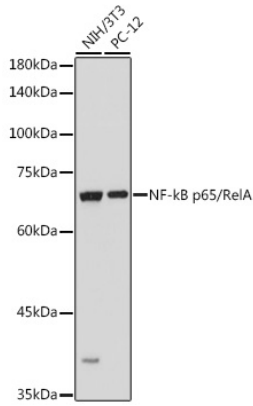
Source	Isotype	Purification
Rabbit	IgG	Affinity purification

Storage

Store at -20°C. Avoid freeze / thaw cycles.

Buffer: PBS with 0.01% thiomersal, 50% glycerol, pH7.3.

Validation Data



Western blot analysis of extracts of various cell lines, using NF-kB p65/RelA antibody (A11202) at 1:1000 dilution.

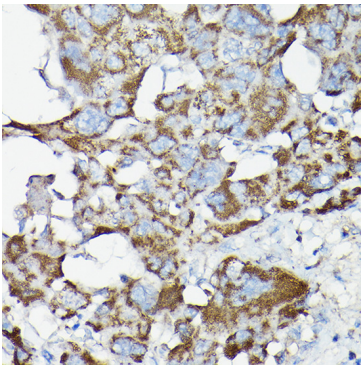
Secondary antibody: HRP Goat Anti-Rabbit IgG (H+L) (AS014) at 1:10000 dilution.

Lysates/proteins: 25ug per lane.

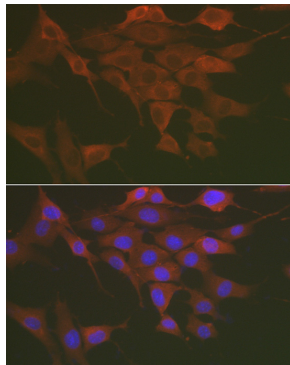
Blocking buffer: 3% nonfat dry milk in TBST.

Detection: ECL Basic Kit (RM00020).

Exposure time: 1s.



Immunohistochemistry of paraffin-embedded human liver cancer using NF-kB p65/RelA Rabbit pAb (A11202) at dilution of 1:200 (40x lens). Perform high pressure antigen retrieval with 10 mM citrate buffer pH 6.0 before commencing with IHC staining protocol.



Immunofluorescence analysis of NIH/3T3 cells using NF-kB p65/RelA Rabbit pAb (A11202) at dilution of 1:150 (40x lens). Blue: DAPI for nuclear staining.