

TAF9B Ab

[Images\(1\)](#)

Cat.#: DF8206
Size: 100ul,200ul

Concn.: ~1mg/ml
Source: Rabbit

Mol.Wt.: 28 kDa
Clonality: Polyclonal

Application: WB 1:1000-3000, ELISA(peptide) 1:20000-1:40000
*The optimal dilutions should be determined by the end user.

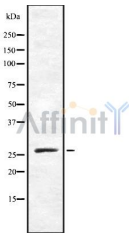
Reactivity: Human,Mouse

Storage: Rabbit IgG in phosphate buffered saline , pH 7.4, 150mM NaCl, 0.02% sodium azide and 50% glycerol. Store at -20 °C. Stable for 12 months from date of receipt.

Purification: The antiserum was purified by peptide affinity chromatography using SulfoLink™ Coupling Resin (Thermo Fisher Scientific).

Immunogen: A synthesized peptide derived from human TAF9B, corresponding to a region within N-terminal amino acids.

Uniprot: Q9HBM6



Western blot analysis of TAF9B using NIH-3T3 whole cell lysates

IMPORTANT: For western blot, incubate membrane with diluted primary Ab in 5% w/v milk , 1X TBS, 0.1% Tween@20 at 4°C with gentle shaking, overnight.

For Research Use Only. Not for use in diagnostic and therapeutic procedures. Not for resale without express authorization.