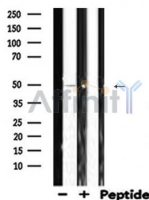


## Doublecortin Ab

[Images\(1\)](#)

|                        |  |                       |
|------------------------|--|-----------------------|
| Cat.#: DF6268          | Concn.: ~1mg/ml  | Mol.Wt.: 45kDa        |
| Size: 100ul,200ul,50ul | Source: Rabbit   | Clonality: Polyclonal |
| Application:           | WB 1:500-1:2000, IHC 1:50-1:200, IF/ICC 1:100-1:500, ELISA(peptide) 1:20000-1:40000<br>*The optimal dilutions should be determined by the end user.  |                       |
| Reactivity:            | Human,Mouse,Rat  |                       |
| Purification:          | The antiserum was purified by peptide affinity chromatography using SulfoLink™ Coupling Resin (Thermo Fisher Scientific).  |                       |
| Immunogen:             | A synthesized peptide derived from human Doublecortin, corresponding to a region within the internal amino acids.  |                       |
| Uniprot:               | O43602   |                       |
| Description:           | Mutations in Doublecortin cause Lissencephaly (smooth brain), a neuronal migration disorder characterized by epilepsy and mental retardation . Doublecortin is a microtubule associated protein that stabilizes and bundles microtubules. A conserved doublecortin domain mediates the interaction with microtubules, and interestingly most missense mutations cluster in this domain . Kinases JNK, CDK5 and PKA phosphorylate doublecortin. JNK phosphorylates Thr321, Thr331 and Ser334 while PKA phosphorylates Ser47 and CDK5 phosphorylates Ser297 (3-5). Phosphorylation of Ser297 lowers the affinity of doublecortin to microtubules. Furthermore, mutations of Ser297 result in migration defects . |                       |
| Storage:               | Rabbit IgG in phosphate buffered saline , pH 7.4, 150mM NaCl, 0.02% sodium azide and 50% glycerol. Store at -20 °C. Stable for 12 months from date of receipt.   |                       |



Western blot analysis of DCX expression in Rat spleen lysates

**IMPORTANT:** For western blot, incubate membrane with diluted primary Ab in 5% w/v milk , 1X TBS, 0.1% Tween@20 at 4°C with gentle shaking, overnight.



**Affinity Biosciences**  
website: [www.affbiotech.com](http://www.affbiotech.com)  
order: [order@affbiotech.com](mailto:order@affbiotech.com)

---

procedures. Not for resale without express authorization.