

## GNPAT Ab

[Images\(2\)](#)

Cat.#: DF3993  
Size: 100ul,200ul,50ul

Concn.: ~1mg/ml  
Source: Rabbit

Mol.Wt.: 77 KD  
Clonality: Polyclonal

**Application:** WB 1:500-1:1000, IF/ICC 1:100-1:500, ELISA(peptide) 1:20000-1:40000  
\*The optimal dilutions should be determined by the end user.

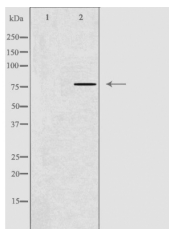
**Reactivity:** Human

**Purification:** The antiserum was purified by peptide affinity chromatography using SulfoLink™ Coupling Resin (Thermo Fisher Scientific).

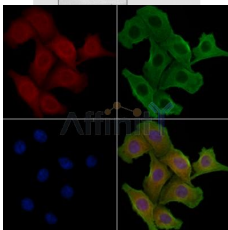
**Immunogen:** A synthesized peptide derived from human GNPAT, corresponding to a region within the internal amino acids.

**Uniprot:** O15228

**Storage:** Rabbit IgG in phosphate buffered saline , pH 7.4, 150mM NaCl, 0.02% sodium azide and 50% glycerol. Store at -20 °C. Stable for 12 months from date of receipt.



Western blot analysis of extracts from HT-29 cells using GNPAT Ab. The lane on the left was treated with the antigen-specific peptide.



DF3993 staining HeLa cells by IF/ICC. The samples were fixed with PFA and permeabilized in 0.1% Triton X-100, then blocked in 10% serum for 45 minutes at 25°C. Samples were then incubated with primary Ab(DF3993) and mouse anti-beta tubulin Ab(T0023) for 1 hour at 37°C. An AlexaFluor594 conjugated goat anti-rabbit IgG(H+L) Ab(Red) and an AlexaFluor488 conjugated goat anti-mouse IgG(H+L) Ab(Green) were used as the secondary Ab.

The nuclear counter stain is DAPI(blue).

**IMPORTANT:** For western blot, incubate membrane with diluted primary Ab in 5% w/v milk , 1X TBS, 0.1% Tween@20 at 4°C with gentle shaking, overnight.

For Research Use Only. Not for use in diagnostic and therapeutic procedures. Not for resale without express authorization.