

## BCL2L13 Ab

[Images\(1\)](#)

Cat.#: DF2649  
Size: 100ul,200ul,50ul

Concn.: ~1mg/ml  
Source: Rabbit

Mol.Wt.: 50 kDa;  
Clonality: Polyclonal

Application: WB 1:500-1:2000, IHC 1:50-1:200, ELISA(peptide) 1:20000-1:40000  
\*The optimal dilutions should be determined by the end user.

Reactivity: Human

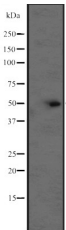
Purification: The antiserum was purified by peptide affinity chromatography using SulfoLink™ Coupling Resin (Thermo Fisher Scientific).

Immunogen: A synthesized peptide derived from human BCL2L13, corresponding to a region within the internal amino acids.

Uniprot: Q9BXX5

Description: May promote the activation of caspase-3 and apoptosis.

Storage: Rabbit IgG in phosphate buffered saline, pH 7.4, 150mM NaCl, 0.02% sodium azide and 50% glycerol. Store at -20 °C. Stable for 12 months from date of receipt.



Western blot analysis of BCL2L13 expression in CEM cell lysates ,The lane on the left was treated with the antigen-specific peptide.

**IMPORTANT:** For western blot, incubate membrane with diluted primary Ab in 5% w/v milk , 1X TBS, 0.1% Tween@20 at 4°C with gentle shaking, overnight.

For Research Use Only. Not for use in diagnostic and therapeutic procedures. Not for resale without express authorization.