

## USF2 Ab

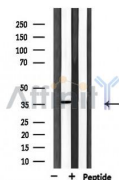
[References\(1\)](#) [Images\(5\)](#)

Cat.#: AF0291  
Size: 100ul,200ul,50ul

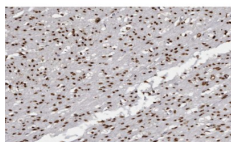
Concn.: ~1mg/ml  
Source: Rabbit

Mol.Wt.: 40kDa  
Clonality: Polyclonal

Application:	WB 1:500-1:3000, IHC 1:50-1:200, IF/ICC 1:100-1:500, ELISA(peptide) 1:20000-1:40000 *The optimal dilutions should be determined by the end user.
Reactivity:	Human,Mouse,Rat
Purification:	The antiserum was purified by peptide affinity chromatography using SulfoLink™ Coupling Resin (Thermo Fisher Scientific).
Immunogen:	A synthesized peptide derived from human USF2, corresponding to a region within the internal amino acids.
Uniprot:	Q15853
Description:	USF2 Transcription factor that binds to a symmetrical DNA sequence (E-boxes) (5'-CACGTG-3') that is found in a variety of viral and cellular promoters. Interacts with MAF. Efficient DNA binding requires dimerization with another bHLH protein. Binds DNA as an homodimer or a heterodimer (USF1/USF2).
Storage:	Rabbit IgG in phosphate buffered saline , pH 7.4, 150mM NaCl, 0.02% sodium azide and 50% glycerol. Store at -20 °C. Stable for 12 months from date of receipt.



Western blot analysis of extracts from HepG2, using USF2 Ab.



AF0291 at 1/100 staining human Smooth muscle tissue sections by IHC-P. The tissue was formaldehyde fixed and a heat mediated antigen retrieval step in citrate buffer was performed. The tissue was then blocked and incubated with the Ab for 1.5 hours at 22°C. An HRP conjugated goat anti-rabbit Ab was used as the secondary Ab.

---

in 5% w/v milk , 1X TBS, 0.1% Tween@20 at 4°C with gentle shaking,  
overnight.

---

For Research Use Only. Not for use in diagnostic and therapeutic  
procedures. Not for resale without express authorization.