

MARK4 Ab

[Images\(2\)](#)

Cat.#: AF0693
Size: 100ul, 200ul, 50ul

Concn.: ~1mg/ml
Source: Rabbit

Mol.Wt.: 82kDa
Clonality: Polyclonal

Application: IF/ICC 1:100-1:500, WB 1:500-1:2000, ELISA(peptide) 1:20000-1:40000
*The optimal dilutions should be determined by the end user.

Reactivity: Human, Mouse

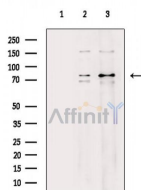
Purification: The antiserum was purified by peptide affinity chromatography using SulfoLink™ Coupling Resin (Thermo Fisher Scientific).

Immunogen: A synthesized peptide derived from human MARK4, corresponding to a region within the internal amino acids.

Uniprot: Q96L34

Description: MARK4 a member of the CAMKL family of protein kinases. Normally expressed in neural progenitors and is re-expressed in gliomas.

Storage: Rabbit IgG in phosphate buffered saline , pH 7.4, 150mM NaCl, 0.02% sodium azide and 50% glycerol. Store at -20 °C. Stable for 12 months from date of receipt.



Western blot analysis of extracts from various samples, using MARK4 Ab.

Lane 1: HepG2 cells, blocked with antigen-specific peptides,

Lane 2: HepG2 cells,

Lane 3: Raji cells (uv treatment).

IMPORTANT: For western blot, incubate membrane with diluted primary Ab in 5% w/v milk , 1X TBS, 0.1% Tween@20 at 4°C with gentle shaking, overnight.

For Research Use Only. Not for use in diagnostic and therapeutic procedures. Not for resale without express authorization.