

Synaptophysin Rabbit pAb

Catalog No.: A6344 **4 Publications**

Basic Information

Observed MW

38KDa

Calculated MW

20kDa/33kDa

Category

Primary antibody

Applications

WB,IHC,IF/ICC,IP

Cross-Reactivity

Human, Mouse, Rat

Background

This gene encodes an integral membrane protein of small synaptic vesicles in brain and endocrine cells. The protein also binds cholesterol and is thought to direct targeting of vesicle-associated membrane protein 2 (synaptobrevin) to intracellular compartments. Mutations in this gene are associated with X-linked mental retardation (XLMR).

Recommended Dilutions

WB	1:500 - 1:2000
IHC	1:50 - 1:100
IF/ICC	1:50 - 1:200
IP	1:50 - 1:200

Immunogen Information

Gene ID

6855

Swiss Prot

P08247


Immunogen

Recombinant fusion protein containing a sequence corresponding to amino acids 222-313 of human Synaptophysin (NP_003170.1).

Synonyms

MRX96;MRXSYP;SYP

Contact

 | www.abclonal.com

Product Information

Source

Rabbit

Isotype

IgG

Purification

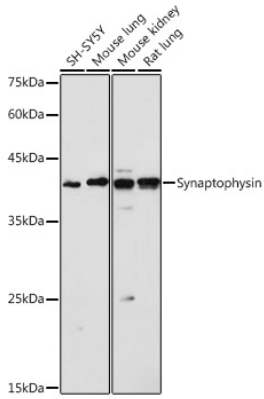
Affinity purification

Storage

Store at -20°C. Avoid freeze / thaw cycles.

Buffer: PBS with 0.02% sodium azide,50% glycerol,pH7.3.

Validation Data



Western blot analysis of extracts of various cell lines, using Synaptophysin antibody (A6344) at 1:1000 dilution.

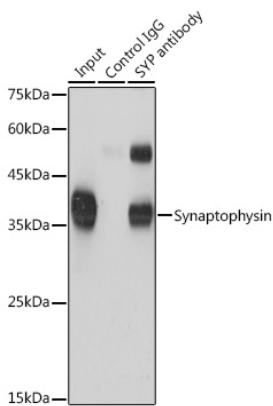
Secondary antibody: HRP Goat Anti-Rabbit IgG (H+L) (AS014) at 1:10000 dilution.

Lysates/proteins: 25ug per lane.

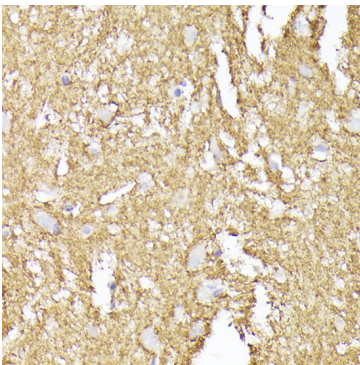
Blocking buffer: 3% nonfat dry milk in TBST.

Detection: ECL Basic Kit (RM00020).

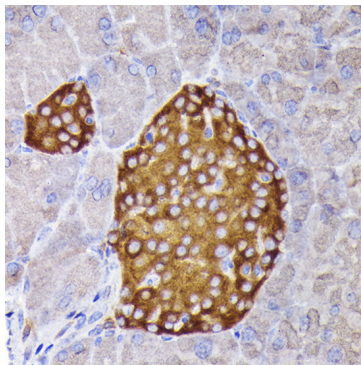
Exposure time: 1s.



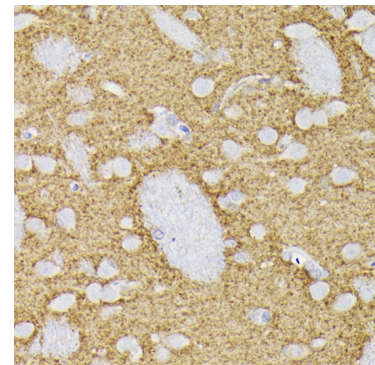
Immunoprecipitation analysis of 600ug extracts of Mouse brain cells using 3ug Synaptophysin antibody (A6344). Western blot was performed from the immunoprecipitate using Synaptophysin antibody (A6344) at a dilution of 1:1000.



Immunohistochemistry of paraffin-embedded human brain using Synaptophysin Rabbit pAb (A6344) at dilution of 1:200 (40x lens). Perform high pressure antigen retrieval with 10 mM citrate buffer pH 6.0 before commencing with IHC staining protocol.

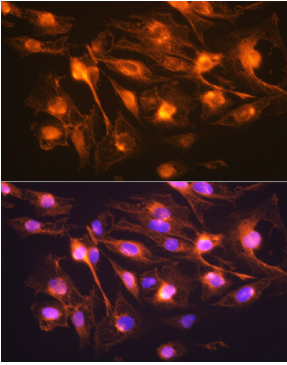


Immunohistochemistry of paraffin-embedded mouse pancreatic islet using Synaptophysin Rabbit pAb (A6344) at dilution of 1:200 (40x lens). Perform high pressure antigen retrieval with 10 mM citrate buffer pH 6.0 before commencing with IHC staining protocol.

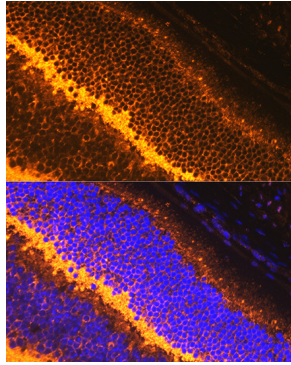


Immunohistochemistry of paraffin-embedded rat brain using Synaptophysin Rabbit pAb (A6344) at dilution of 1:200 (40x lens). Perform high pressure antigen retrieval with 10 mM citrate buffer pH 6.0 before commencing with IHC staining protocol.

Validation Data



Immunofluorescence analysis of C6 cells using Synaptophysin Rabbit pAb (A6344) at dilution of 1:100 (40x lens). Blue: DAPI for nuclear staining.



Immunofluorescence analysis of mouse retina using Synaptophysin Rabbit pAb (A6344) at dilution of 1:100 (40x lens). Blue: DAPI for nuclear staining.