

SRSF1/SF2/ASF Rabbit mAb

Catalog No.: A4091 **Recombinant** **1 Publications**

Basic Information

Observed MW

33KDa

Calculated MW

33kDa

Category

Primary antibody

Applications

WB,IHC

Cross-Reactivity

Human, Mouse, Rat

CloneNo number

ARC51453

Background

This gene encodes a member of the arginine/serine-rich splicing factor protein family. The encoded protein can either activate or repress splicing, depending on its phosphorylation state and its interaction partners. Multiple transcript variants have been found for this gene. There is a pseudogene of this gene on chromosome 13. [provided by RefSeq, Jun 2014]

Recommended Dilutions

WB	1:500 - 1:2000
IHC	1:50 - 1:200

Immunogen Information

Gene ID	Swiss Prot
6426	Q07955

Immunogen

A synthetic peptide corresponding to a sequence within amino acids 100-200 of human SRSF1/SF2/ASF (NP_008855.1).

Synonyms

ASF; SF2; SF2p33; SFRS1; SRp30a

Contact

 | www.abclonal.com

Product Information

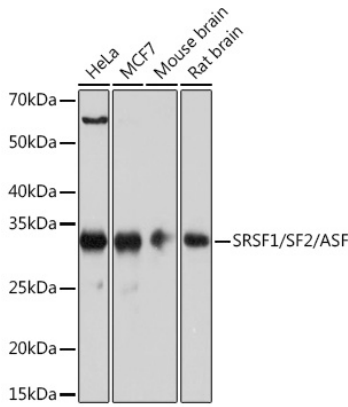
Source	Isotype	Purification
Rabbit	IgG	Affinity purification

Storage

Store at -20°C. Avoid freeze / thaw cycles.

Buffer: PBS with 0.05% proclin300,0.05% BSA,50% glycerol,pH7.3.

Validation Data



Western blot analysis of extracts of various cell lines, using SRSF1/SRSF1/SF2/ASF Rabbit mAb (A4091) at 1:1000 dilution.

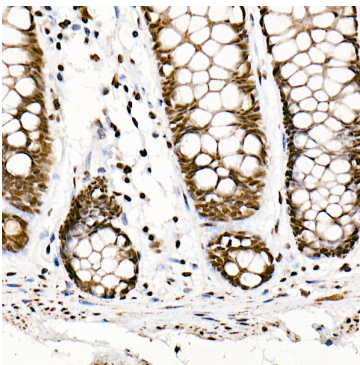
Secondary antibody: HRP Goat Anti-Rabbit IgG (H+L) (AS014) at 1:10000 dilution.

Lysates/proteins: 25ug per lane.

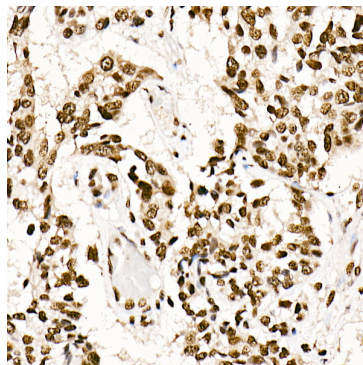
Blocking buffer: 3% nonfat dry milk in TBST.

Detection: ECL Basic Kit (RM00020).

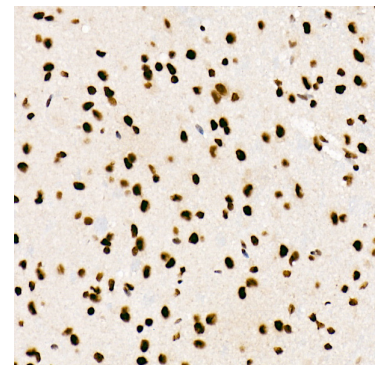
Exposure time: 3s.



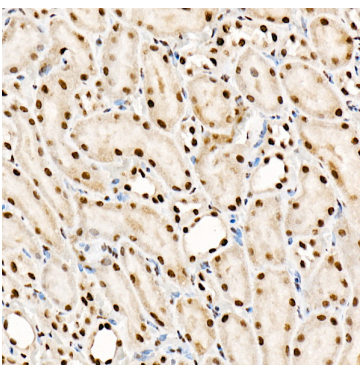
Immunohistochemistry of paraffin-embedded human colon using SRSF1/SF2/ASF Rabbit mAb (A4091) at dilution of 1:100 (40x lens). Perform high pressure antigen retrieval with 10 mM citrate buffer pH 6.0 before commencing with IHC staining protocol.



Immunohistochemistry of paraffin-embedded human esophageal cancer using SRSF1/SF2/ASF Rabbit mAb (A4091) at dilution of 1:100 (40x lens). Perform high pressure antigen retrieval with 10 mM citrate buffer pH 6.0 before commencing with IHC staining protocol.



Immunohistochemistry of paraffin-embedded mouse brain using SRSF1/SF2/ASF Rabbit mAb (A4091) at dilution of 1:100 (40x lens). Perform high pressure antigen retrieval with 10 mM citrate buffer pH 6.0 before commencing with IHC staining protocol.



Immunohistochemistry of paraffin-embedded rat kidney using SRSF1/SF2/ASF Rabbit mAb (A4091) at dilution of 1:100 (40x lens). Perform high pressure antigen retrieval with 10 mM citrate buffer pH 6.0 before commencing with IHC staining protocol.