

TPM2 Rabbit pAb

Catalog No.: A3096

Basic Information

Observed MW

36kDa

Calculated MW

28kDa/32kDa

Category

Primary antibody

Applications

WB,IHC,IF/ICC,IP

Cross-Reactivity

Human, Mouse, Rat

Background

This gene encodes beta-tropomyosin, a member of the actin filament binding protein family, and mainly expressed in slow, type 1 muscle fibers. Mutations in this gene can alter the expression of other sarcomeric tropomyosin proteins, and cause cap disease, nemaline myopathy and distal arthrogyriposis syndromes. Alternatively spliced transcript variants encoding different isoforms have been found for this gene.

Recommended Dilutions

WB	1:500 - 1:1000
IHC	1:50 - 1:100
IF/ICC	1:50 - 1:100
IP	1:50 - 1:100

Immunogen Information

Gene ID

7169

Swiss Prot

P07951

Immunogen

A synthetic peptide corresponding to a sequence within amino acids 300-400 of human TPM2 (P07951).

Synonyms

TPM2;AMCD1;DA1;DA2B;HEL-S-273;NEM4;TMSB

Contact

 | www.abclonal.com

Product Information

Source

Rabbit

Isotype

IgG

Purification

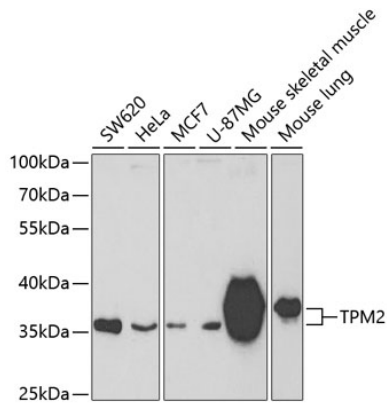
Affinity purification

Storage

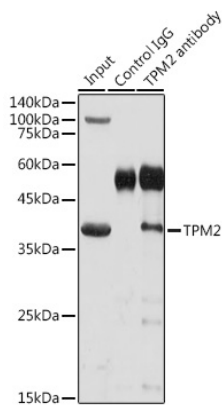
Store at -20°C. Avoid freeze / thaw cycles.

Buffer: PBS with 0.01% thiomersal,50% glycerol,pH7.3.

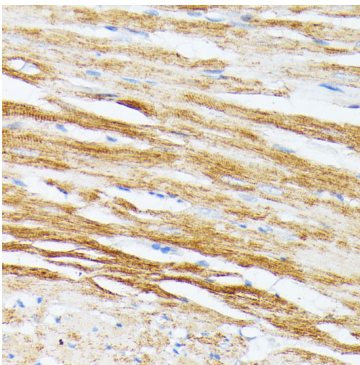
Validation Data



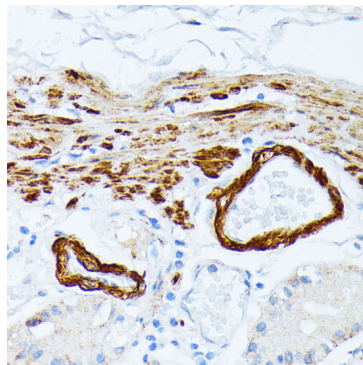
Western blot analysis of extracts of various cell lines, using TPM2 antibody (A3096) at 1:400 dilution. Secondary antibody: HRP Goat Anti-Rabbit IgG (H+L) (AS014) at 1:10000 dilution. Lysates/proteins: 25ug per lane. Blocking buffer: 3% nonfat dry milk in TBST. Detection: ECL Basic Kit (RM00020). Exposure time: 90s.



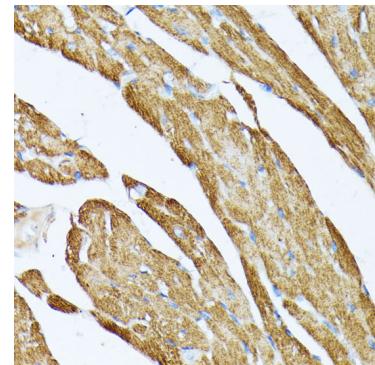
Immunoprecipitation analysis of 300ug extracts of Mouse skeletal muscle cells using 3ug TPM2 antibody (A3096). Western blot was performed from the immunoprecipitate using TPM2 antibody (A3096) at a dilution of 1:1000.



Immunohistochemistry of paraffin-embedded rat heart using TPM2 antibody (A3096) at dilution of 1:100 (40x lens). Perform microwave antigen retrieval with 10 mM PBS buffer pH 7.2 before commencing with IHC staining protocol.



Immunohistochemistry of paraffin-embedded human stomach using TPM2 antibody (A3096) at dilution of 1:100 (40x lens). Perform microwave antigen retrieval with 10 mM PBS buffer pH 7.2 before commencing with IHC staining protocol.



Immunohistochemistry of paraffin-embedded mouse heart using TPM2 antibody (A3096) at dilution of 1:100 (40x lens). Perform microwave antigen retrieval with 10 mM PBS buffer pH 7.2 before commencing with IHC staining protocol.