

PIBF1 Rabbit pAb

Catalog No.: A3072

Basic Information

Observed MW

100kDa

Calculated MW

12kDa/25kDa/35kDa/89kDa

Category

Primary antibody

Applications

WB, IHC

Cross-Reactivity

Human, Mouse, Rat

Background

Recommended Dilutions

WB	1:500 - 1:1000
IHC	1:50 - 1:100

Immunogen Information

Gene ID	Swiss Prot
10464	Q8WXW3

Immunogen

A synthetic peptide corresponding to a sequence within amino acids 1-100 of human PIBF1 (Q8WXW3).

Synonyms

PIBF1;C13orf24;CEP90;PIBF

Contact

 | www.abclonal.com

Product Information

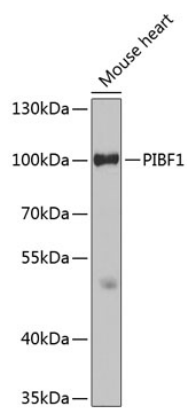
Source	Isotype	Purification
Rabbit	IgG	Affinity purification

Storage

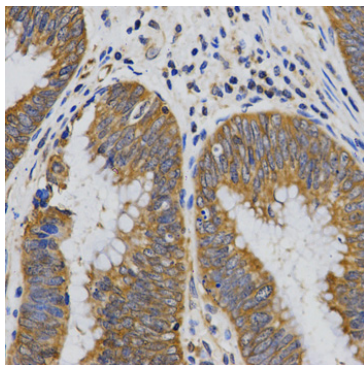
Store at -20°C. Avoid freeze / thaw cycles.

Buffer: PBS with 0.01% thiomersal, 50% glycerol, pH7.3.

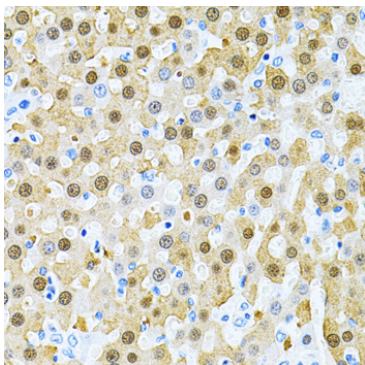
Validation Data



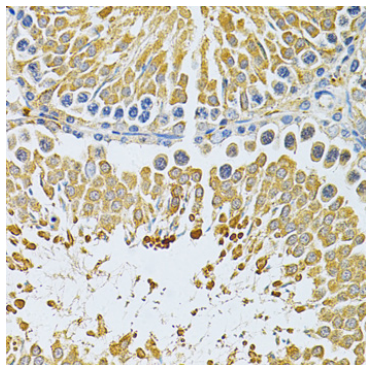
Western blot analysis of extracts of mouse heart, using PIBF1 antibody (A3072) at 1:400 dilution.
Secondary antibody: HRP Goat Anti-Rabbit IgG (H+L) (A5014) at 1:10000 dilution.
Lysates/proteins: 25ug per lane.
Blocking buffer: 3% nonfat dry milk in TBST.
Detection: ECL Basic Kit (RM00020).
Exposure time: 90s.



Immunohistochemistry of paraffin-embedded human rectal cancer using PIBF1 Antibody (A3072) at dilution of 1:200 (40x lens).



Immunohistochemistry of paraffin-embedded rat liver using PIBF1 Antibody (A3072) at dilution of 1:200 (40x lens).



Immunohistochemistry of paraffin-embedded rat testis using PIBF1 Antibody (A3072) at dilution of 1:200 (40x lens).