

# ABCC5 Rabbit pAb

Catalog No.: A3028 **2 Publications**

## Basic Information

### Observed MW

185kDa

### Calculated MW

23kDa/25kDa/155kDa/160kDa

### Category

Primary antibody

### Applications

WB

### Cross-Reactivity

Human, Mouse, Rat

## Background

The protein encoded by this gene is a member of the superfamily of ATP-binding cassette (ABC) transporters. ABC proteins transport various molecules across extra- and intra-cellular membranes. ABC genes are divided into seven distinct subfamilies (ABC1, MDR/TAP, MRP, ALD, OABP, GCN20, White). This protein is a member of the MRP subfamily which is involved in multi-drug resistance. This protein functions in the cellular export of its substrate, cyclic nucleotides. This export contributes to the degradation of phosphodiesterases and possibly an elimination pathway for cyclic nucleotides. Studies show that this protein provides resistance to thiopurine anticancer drugs, 6-mercaptopurine and thioguanine, and the anti-HIV drug 9-(2-phosphonylmethoxyethyl)adenine. This protein may be involved in resistance to thiopurines in acute lymphoblastic leukemia and antiretroviral nucleoside analogs in HIV-infected patients. Alternative splicing results in multiple transcript variants.

## Recommended Dilutions

WB 1:1000 - 1:2000

## Immunogen Information

### Gene ID

10057

### Swiss Prot

O15440

### Immunogen

Recombinant fusion protein containing a sequence corresponding to amino acids 1-179 of human ABCC5 (NP\_005679.2).

### Synonyms

ABCC5;ABC33;EST277145;MOAT-C;MOATC;MRP5;SMRP;pABC11

## Contact

 | [www.abclonal.com](http://www.abclonal.com)

## Product Information

### Source

Rabbit

### Isotype

IgG

### Purification

Affinity purification

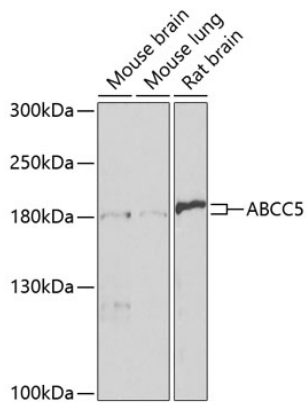
### Storage

Store at -20°C. Avoid freeze / thaw cycles.

Buffer: PBS with 0.02% sodium azide,50% glycerol,pH7.3.

## Validation Data

---



Western blot analysis of extracts of various cell lines, using ABCC5 antibody (A3028) at 1:1000 dilution.

Secondary antibody: HRP Goat Anti-Rabbit IgG (H+L) (AS014) at 1:10000 dilution.

Lysates/proteins: 25ug per lane.

Blocking buffer: 3% nonfat dry milk in TBST.

Detection: ECL Basic Kit (RM00020).

Exposure time: 15s.